

**Alcatel OT-E805C Modem
Driver
Installation Guideline for
Vista**

Contents

1. Installation procedure	3
2. Configuration for using Data Service	7

1. Installation Procedure

Follow these steps to install the device driver

Step 1 Make sure **Win Vista folder** is available for installing device driver (**Figure-1**)

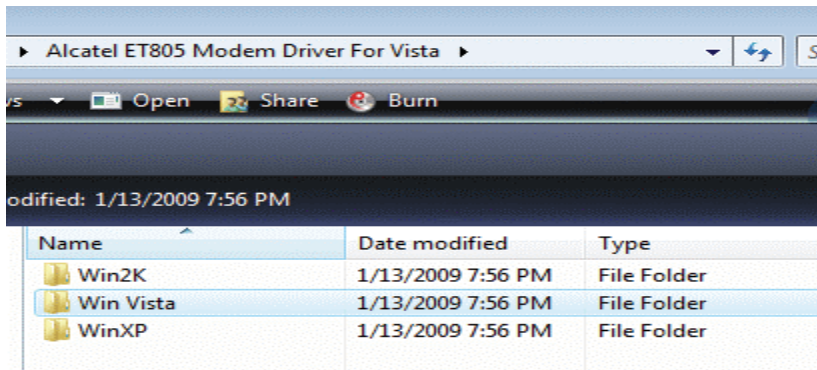


Figure-1

Step 2 Connect the **USB data cable to your computer**. You will see a dialog box in task bar (illustrated in **Figure-2**)

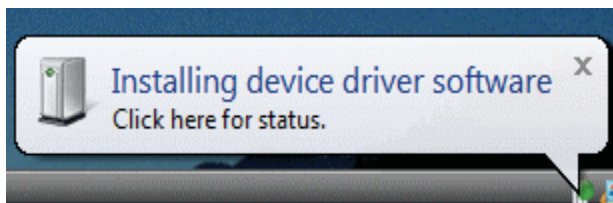


Figure-2

Step 3 Click the **locate and install driver software** (recommended) (**Figure-3**)

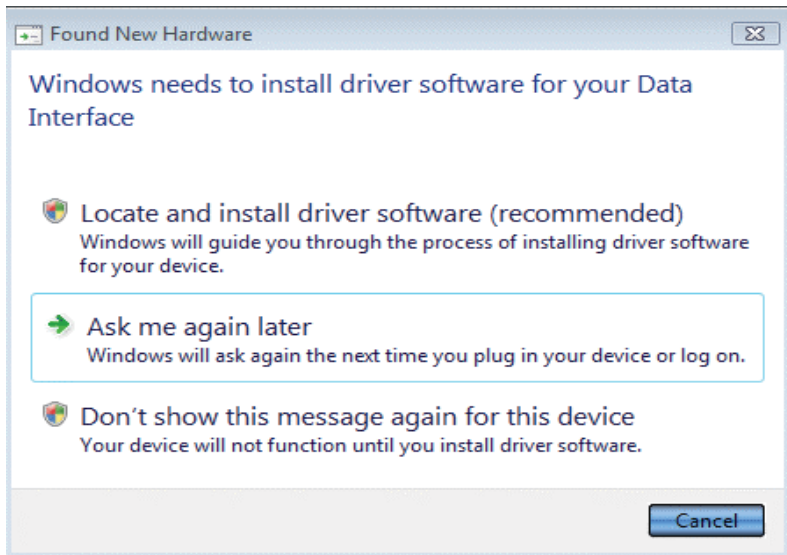


Figure-3

Step 4 Click **Don't search online (Figure-4)**

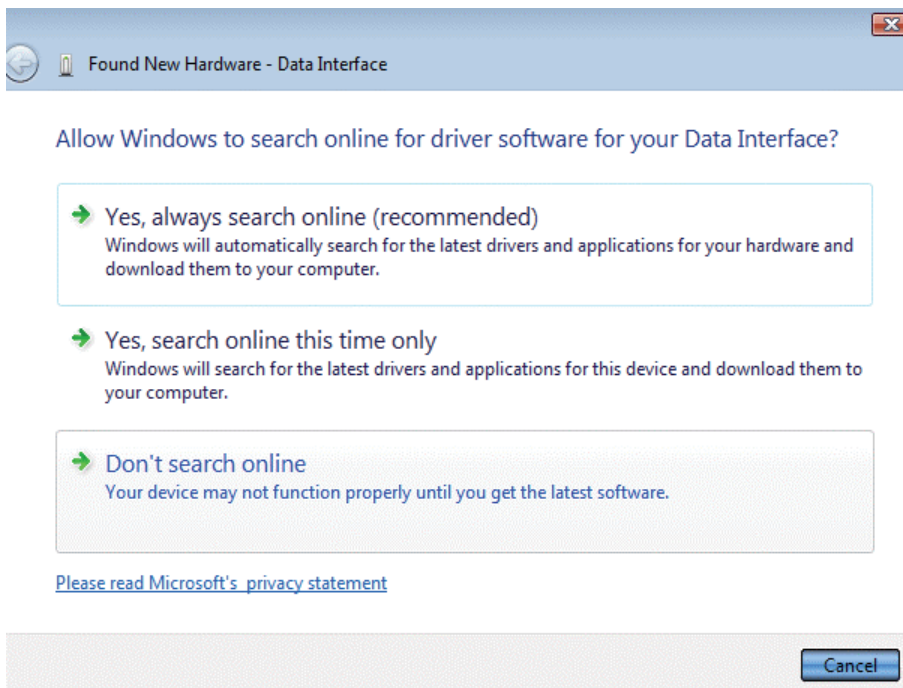


Figure-4

Step 5 Click **I don't have the disc. Show me the other options (Figure 5)**

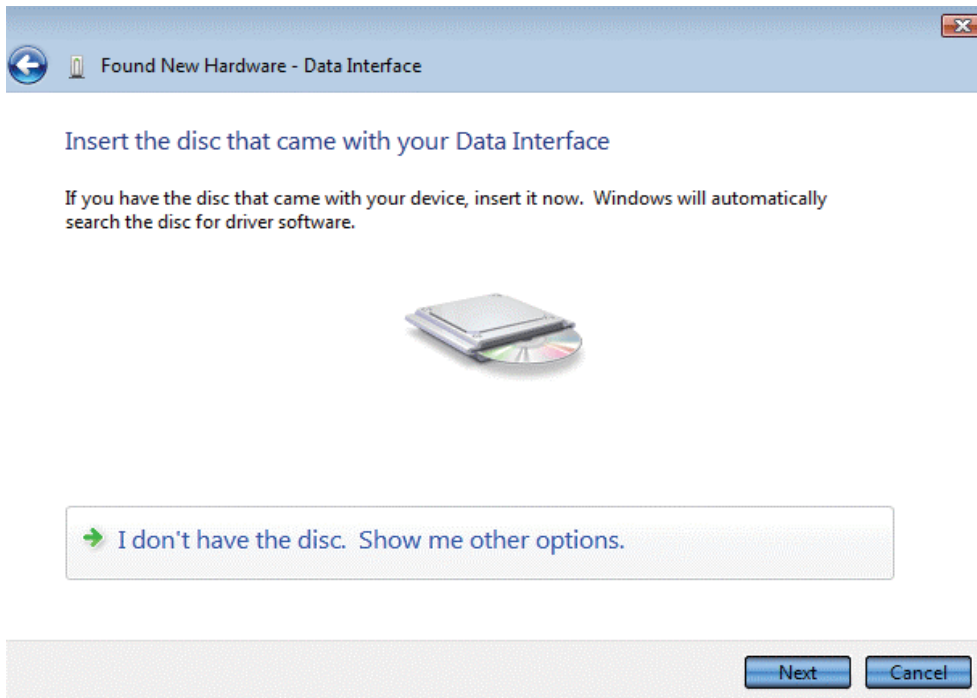


Figure-5

Step 5 Choose the option **Browse my computer for driver software** (advanced) (Figure-6)

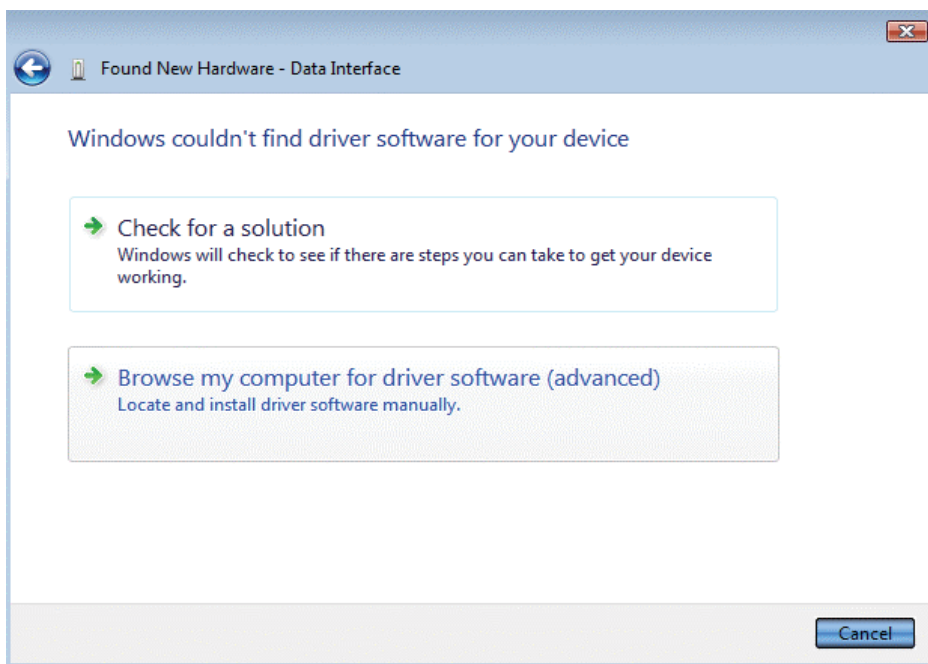


Figure-6

Step 6 Click the **Browse** button and locate device drive>Alcatel ET805 modem driver for vista>WinVista (Figure-7)

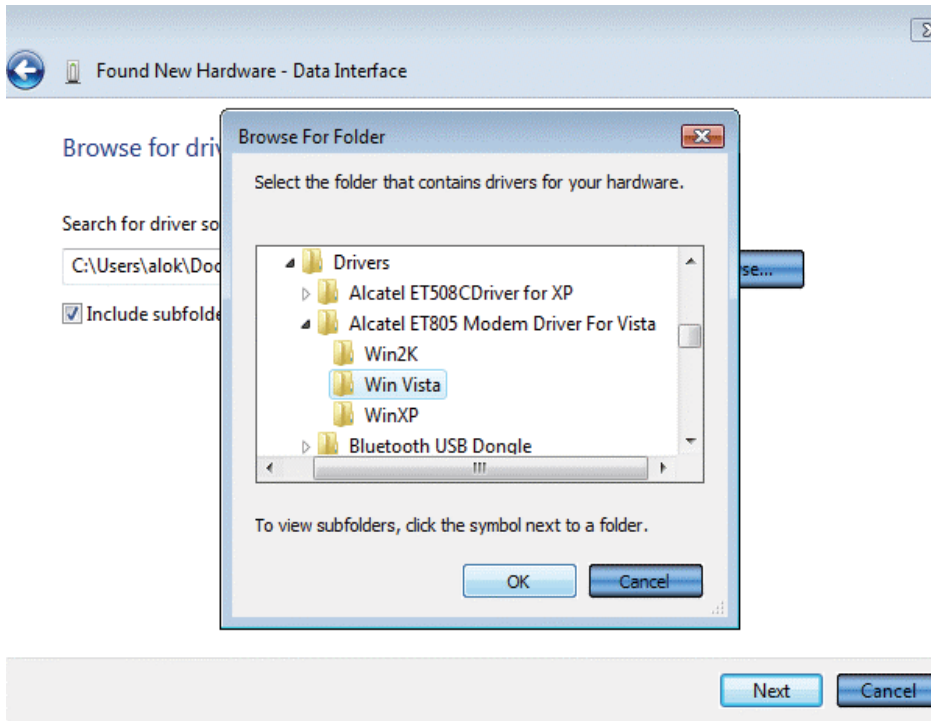


Figure-7

Step 7 Select **install the driver software anyway** (Figure-8)

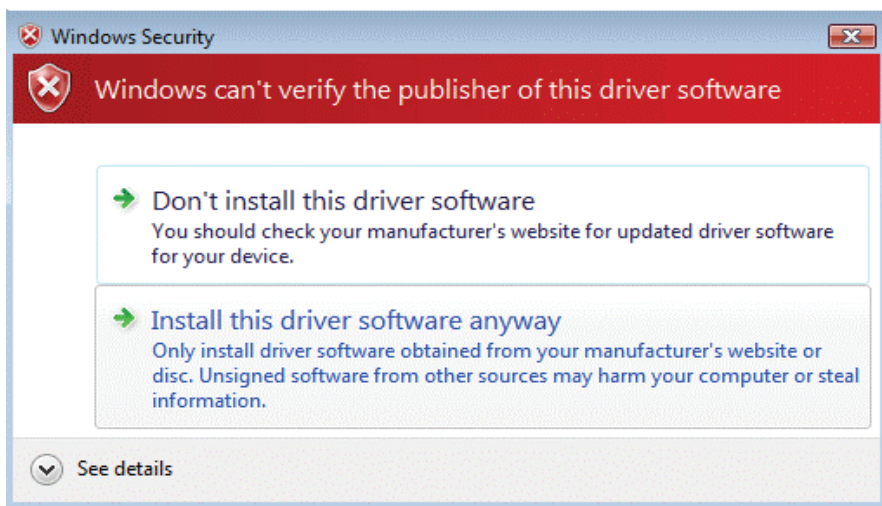


Figure-8

Step 8 The software will search the specific location and install the device driver (Figure-9).

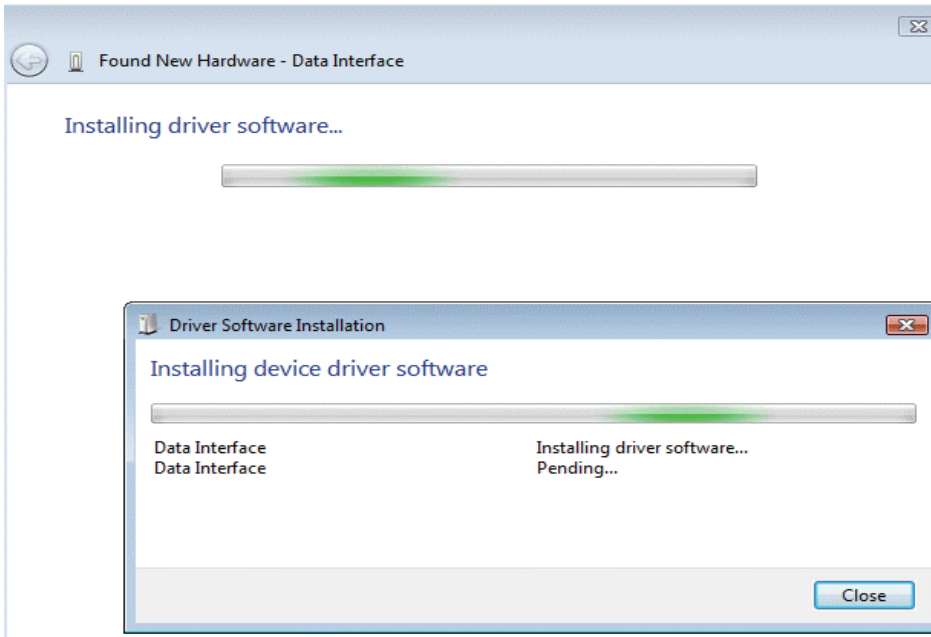


Figure-9

Step 9 Device driver successfully **installed**. Click **Close** button (**Figure-10**)

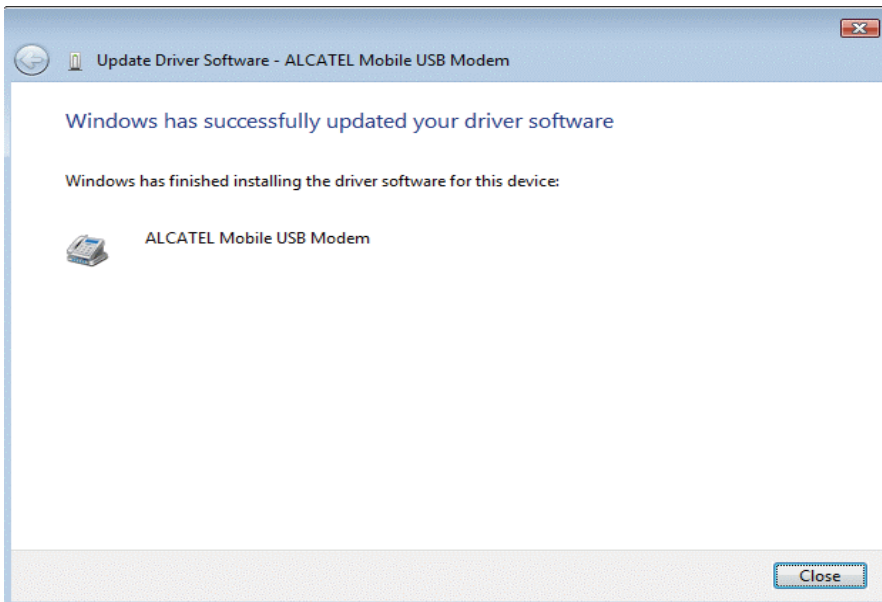


Figure-10

2 Creating connection for windows vista

Follow these steps to create connection for windows vista

Step 1 Go to **start>all programs>Connect To (Figure-2.1)**

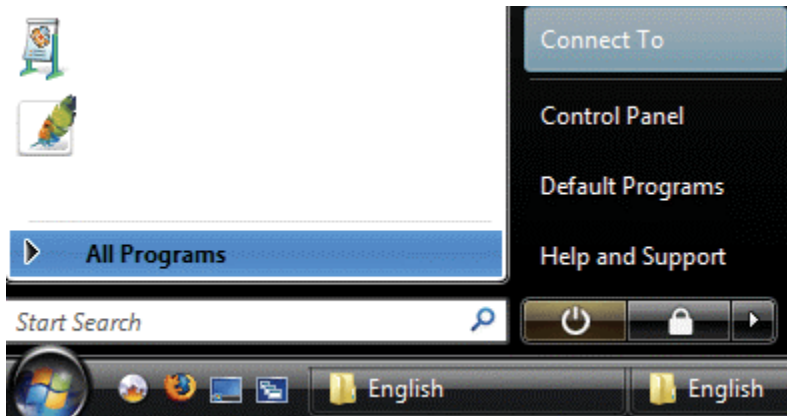


Figure-2.1

Step 2 click the **Set up a connection or network and** then click **connect (Figure-2.2)**

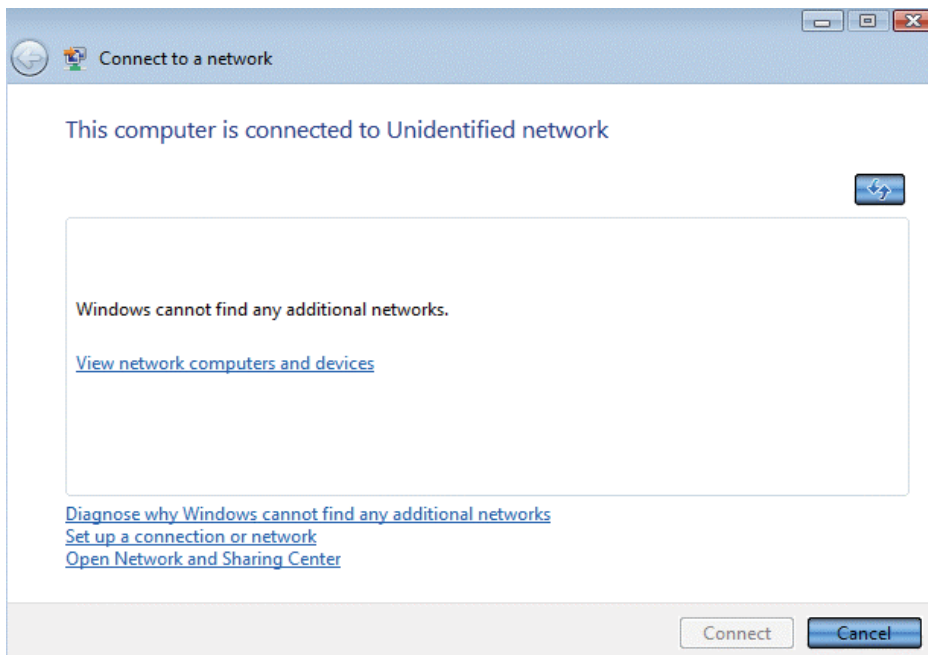


Figure-2.2

Step 3 Select the option of **Set up a dial-up connection and click next (Figure-2.3)**

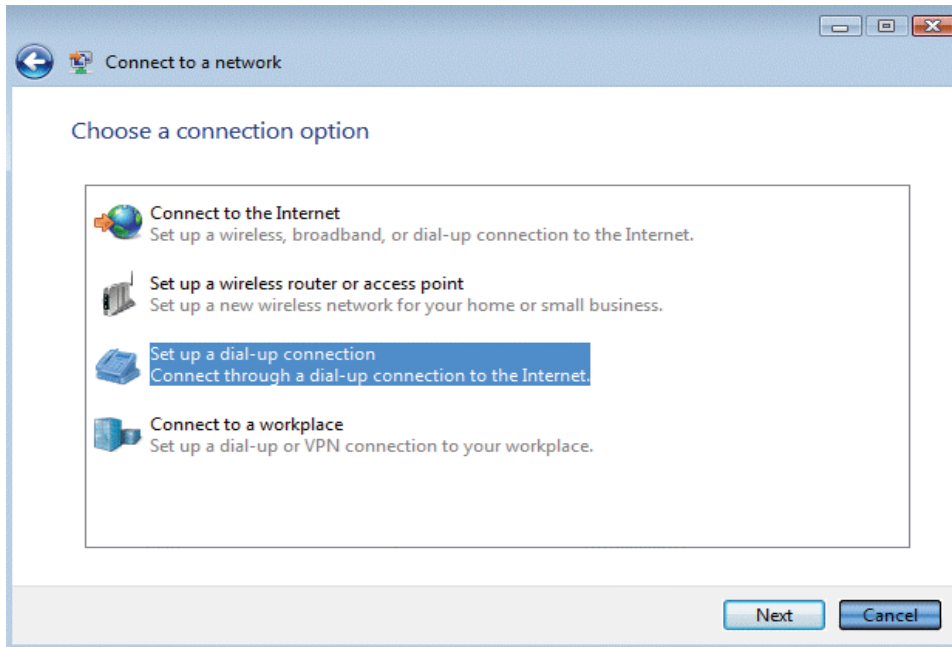


Figure-2.3

Step 4 Write the **dial-up phone number: #777** ;username: **waps** and password **waps** as the below mention Figure-2.3 and click the **connect** button (**Figure-2.4**)

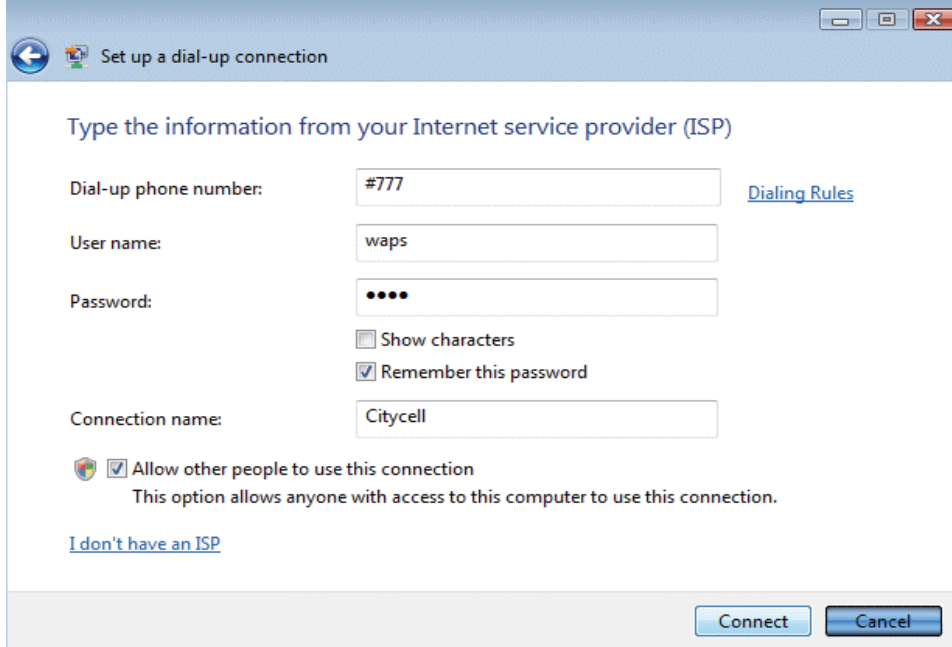


Figure-2.4

Step 5 you are successfully connected to the internet (**Figure-2.5**)

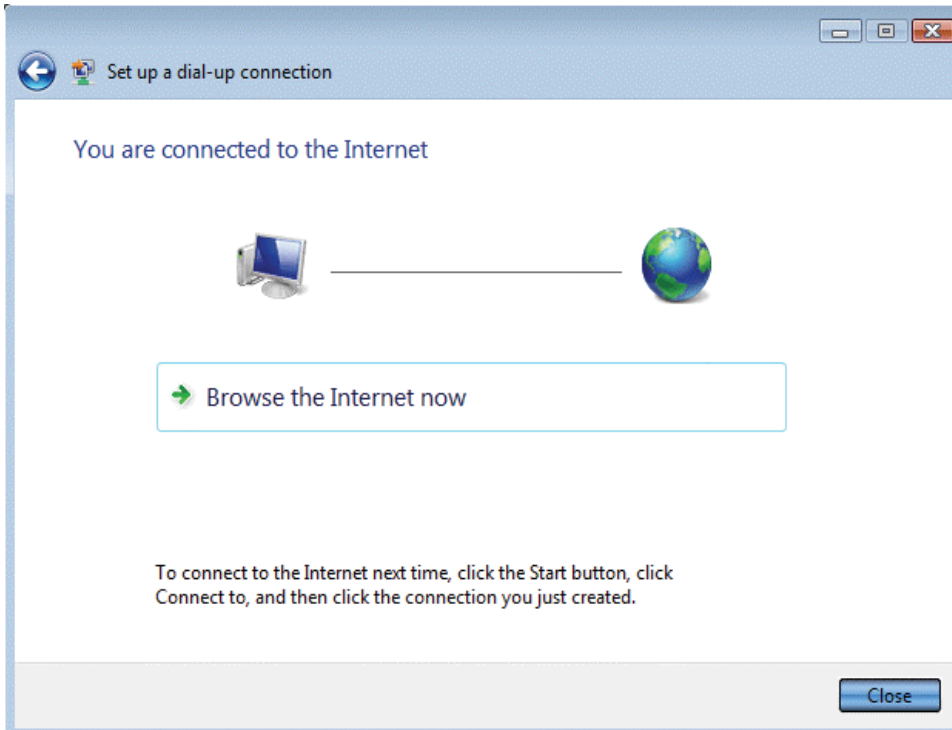


Figure-2.5

Step 6 Go to **Start>control panel** as the below mentioned **Figure-2.6**

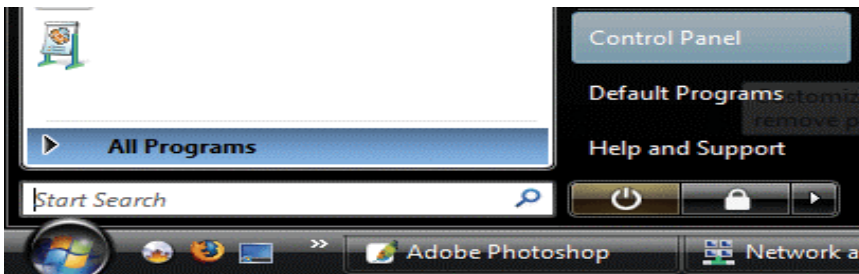


Figure-2.6

Step 7 Click the **Network and Sharing Center (Figure-2.6)**

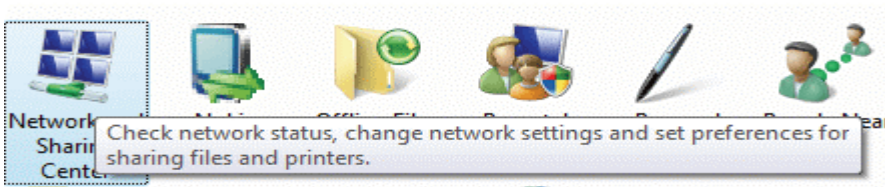


Figure-2.6

Step 9 Click the **Manage network connections (Figure-2.7)**

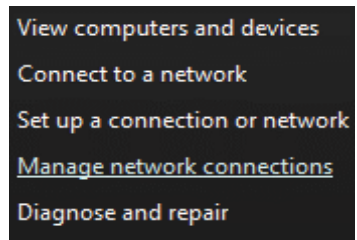


Figure-2.7

Step 10 Right click the **dial-up connection and create shortcut** to your desktop
(Figure-2.8)

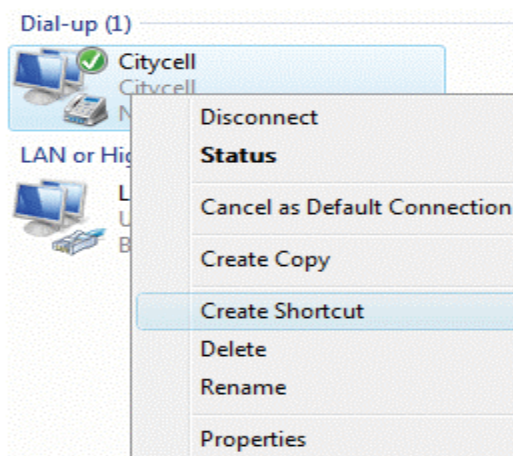


Figure-2.8