

Huawei C 5320 Modem Driver Installation Guideline for Vista

Contents

1. Installation procedure	3
2. Configuration in windows Vista	
7	

1. Installation procedure:

Follow these steps to install the device driver:

Step-1 Double click the **Devsetup.exe** file (**Figure-1**)

Name	Date modified	Type	Size
Win2K	1/13/2009 7:54 PM	File Folder	
WinVista	1/13/2009 7:54 PM	File Folder	
WinXP	1/13/2009 7:54 PM	File Folder	
devsetup.exe	8/18/2007 3:10 AM	Application	140 KB
E600CoInstaller.dll	2/2/2007 3:06 AM	Application Extens...	5 KB
LocateDevice.dll	2/9/2007 1:07 AM	Application Extens...	2 KB

Figure-1

Step 2 Select install this driver software anyway (Figure-2)

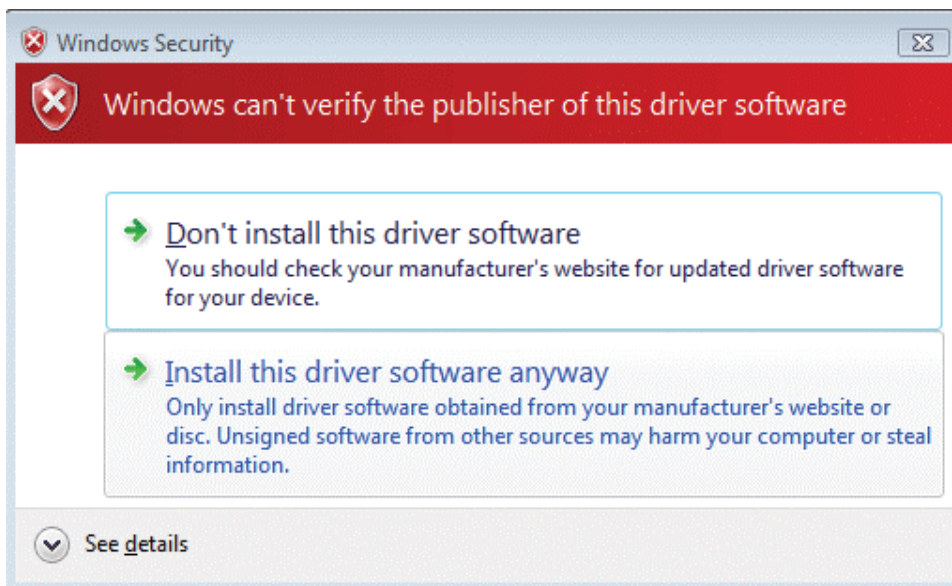


Figure-2

Step 3 Click the locate and install driver software (recommended) (Figure-3)

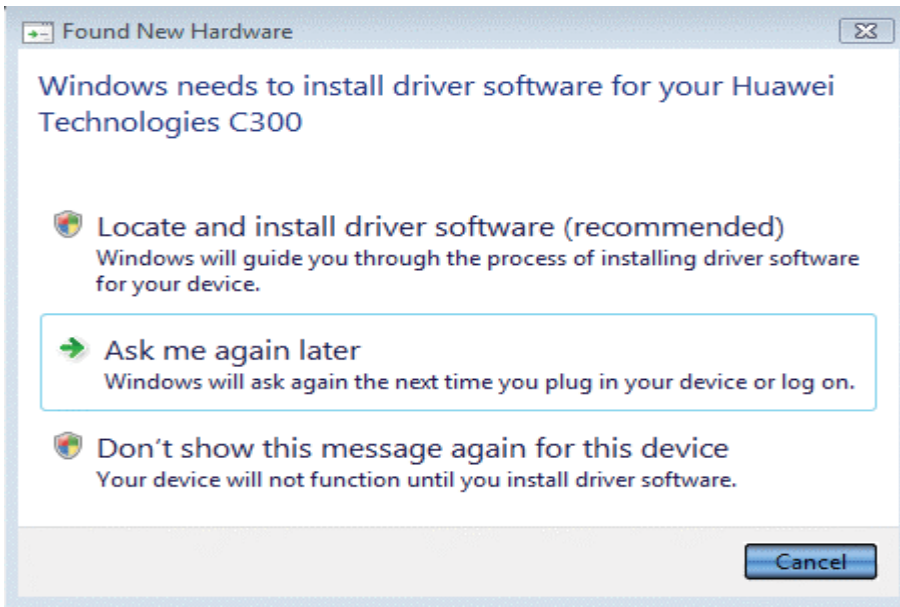


Figure-3

Step 3 Right click **My Computer** icon on the desktop and then click **properties** (Figure-4)

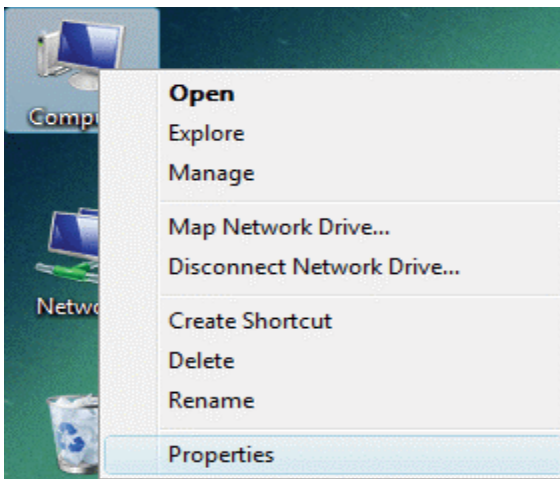


Figure-4

Step 4 Click the **device manager** from the left side of the window (Figure-5)

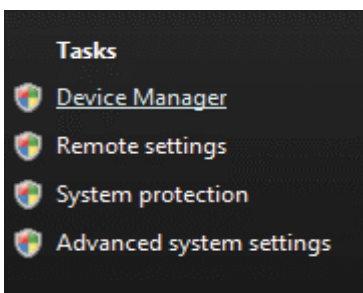


Figure-5

Step 4 click the **other device or modem** to see whether the **Huawei technologies C300 modem is shown** with yellow warning (**Figure-6**)

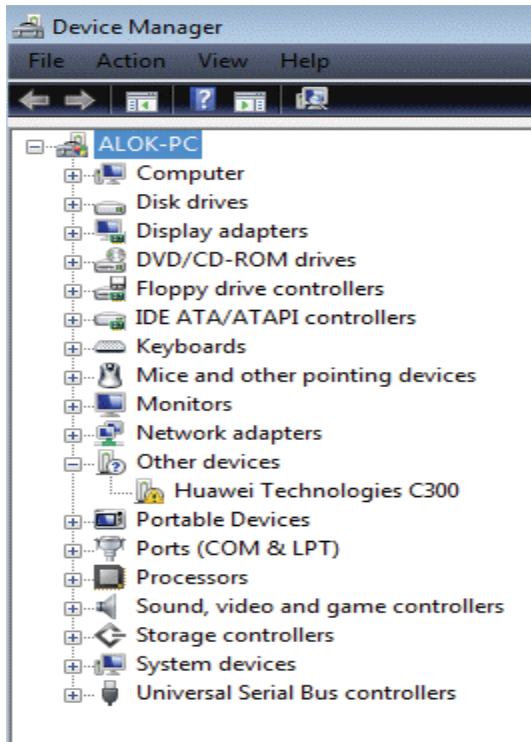


Figure-6

Step 4 Right click of the **Huawei Technologies300** and **Update Driver Software** (**Figure-7**)

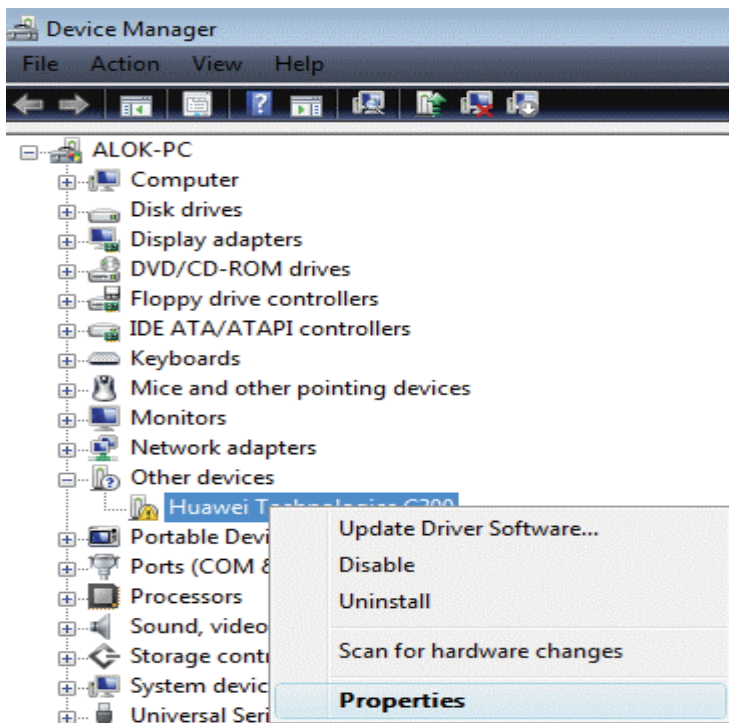


Figure-7

Step 5 Choose the option **Browse my computer for driver software** (Figure-8)

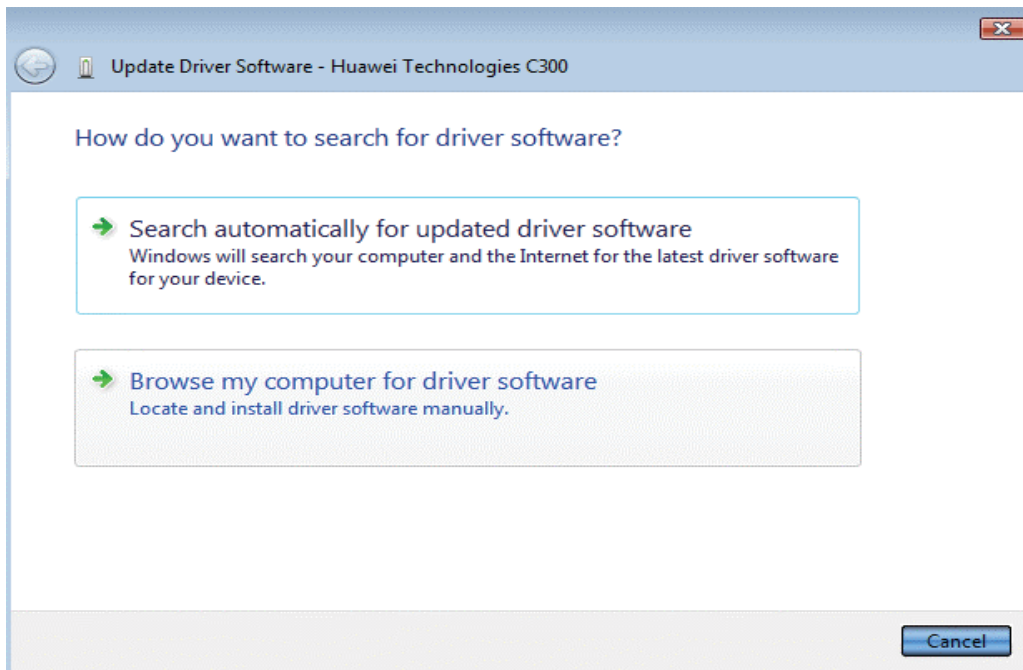


Figure-8

Step 6 Click the **Browse** button and locate your setup folder > Huawei C5320 CDMA1X Vista>DRV_>HC1modem01>WinVista (Figure-9)

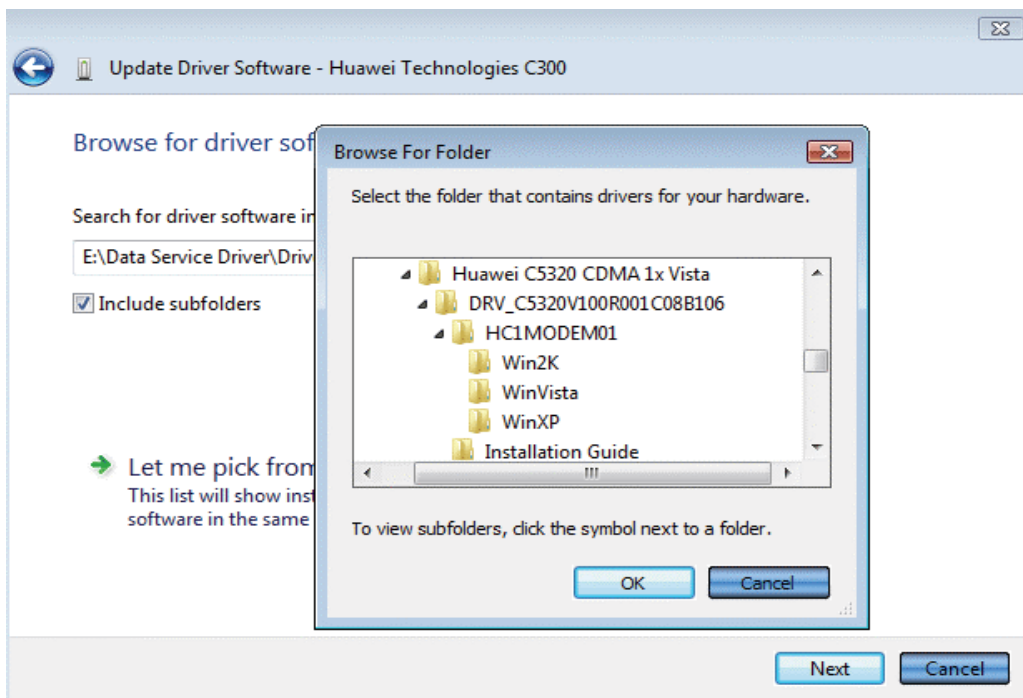


Figure-9

Step 7 Windows has successfully **installed** .Click the **Close** button (**Figure-10**)

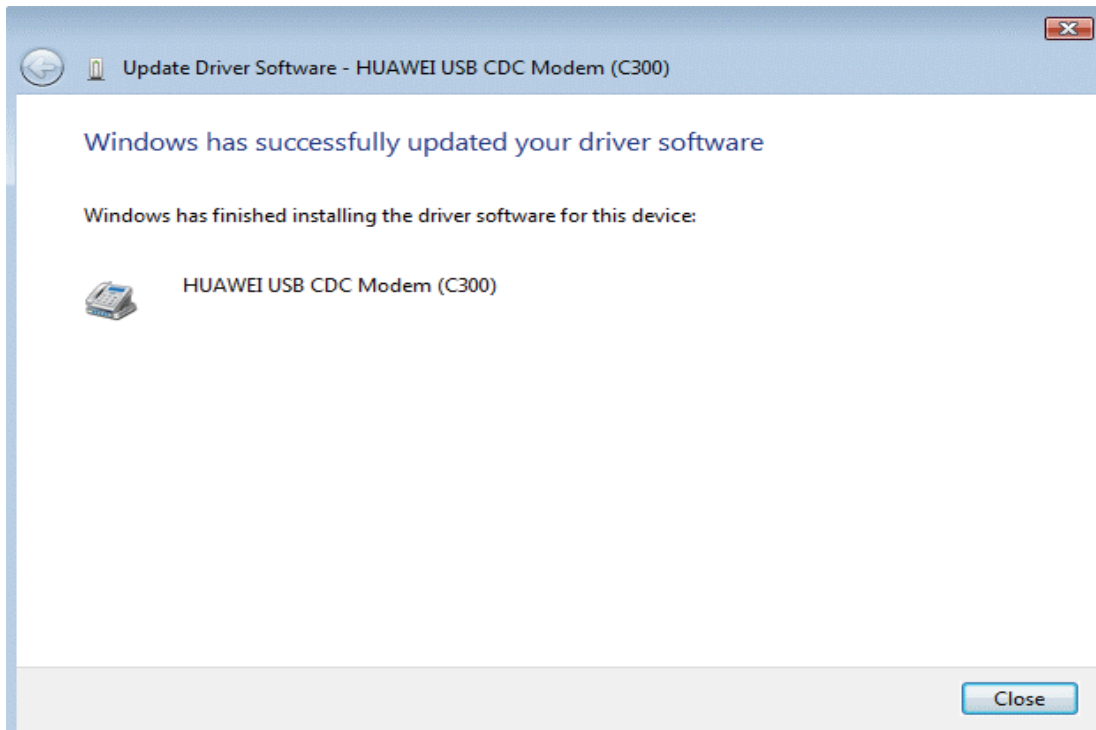


Figure-10

2 Creating connection for windows vista

Follow these steps to create connection for windows vista

Step 1 Go to **start>All programs>Connect To (Figure-2.1)**

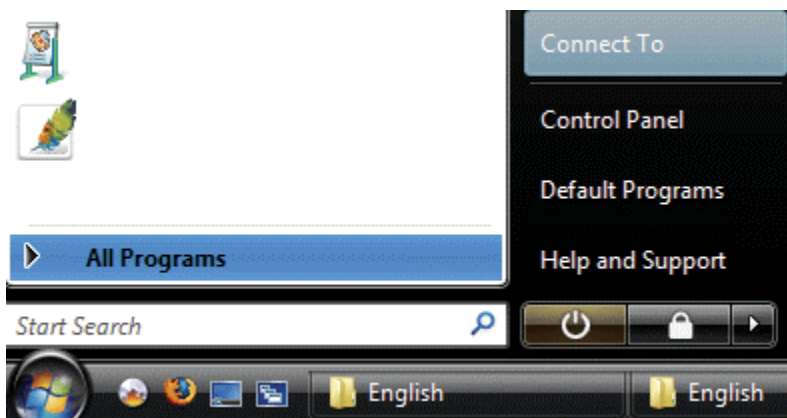


Figure-2.1

Step 2 click the **Set up a connection or network** then click **connect (Figure-2.2)**

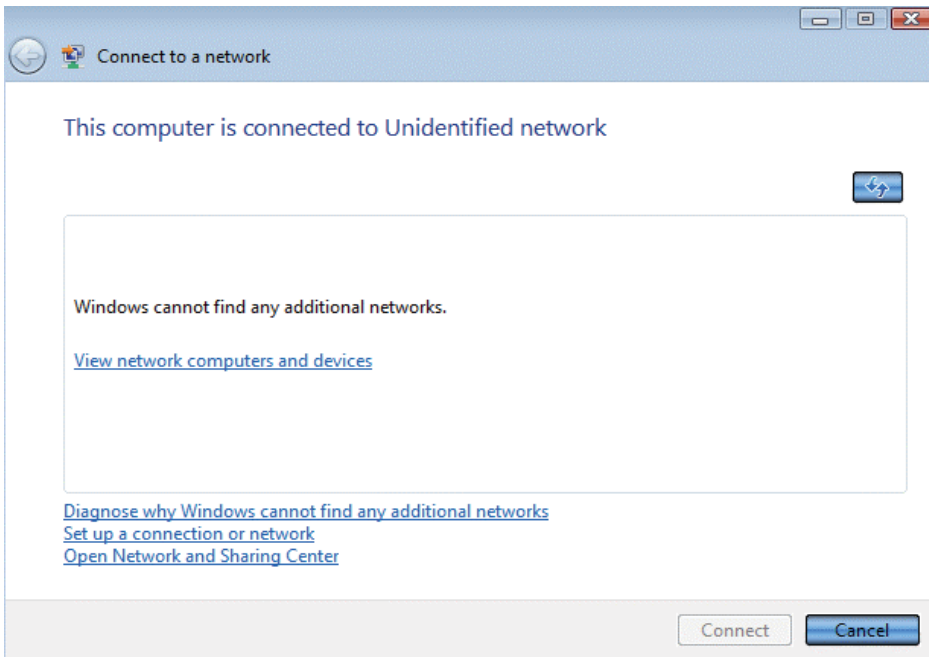


Figure-2.2

Step 3 Select the option of **Set up a dial-up connection (Figure-2.3)**

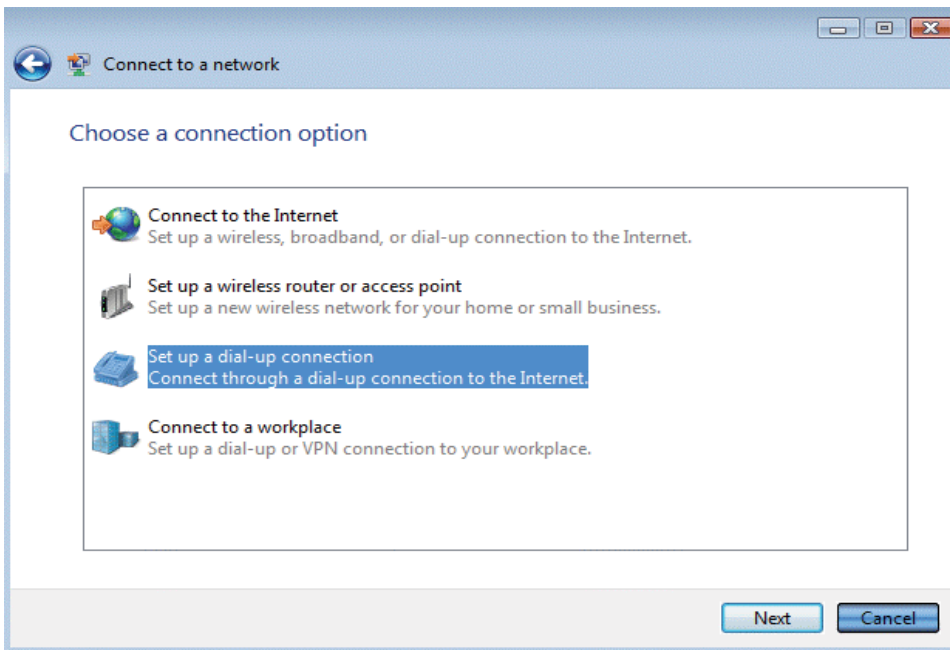


Figure-2.3

Step 4 Write the **dialup phone number: #777**, username: **waps** and password: **waps** (**Figure-2.4**) and click the **connect** button.

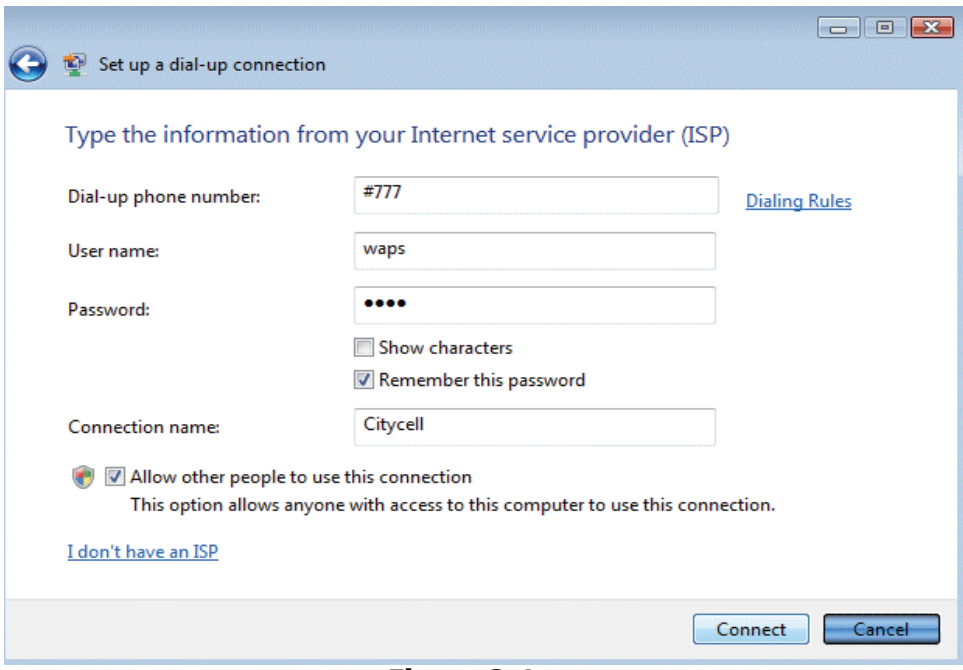


Figure-2.4

Step 5 you are successfully connected to the internet (Figure-2.5)

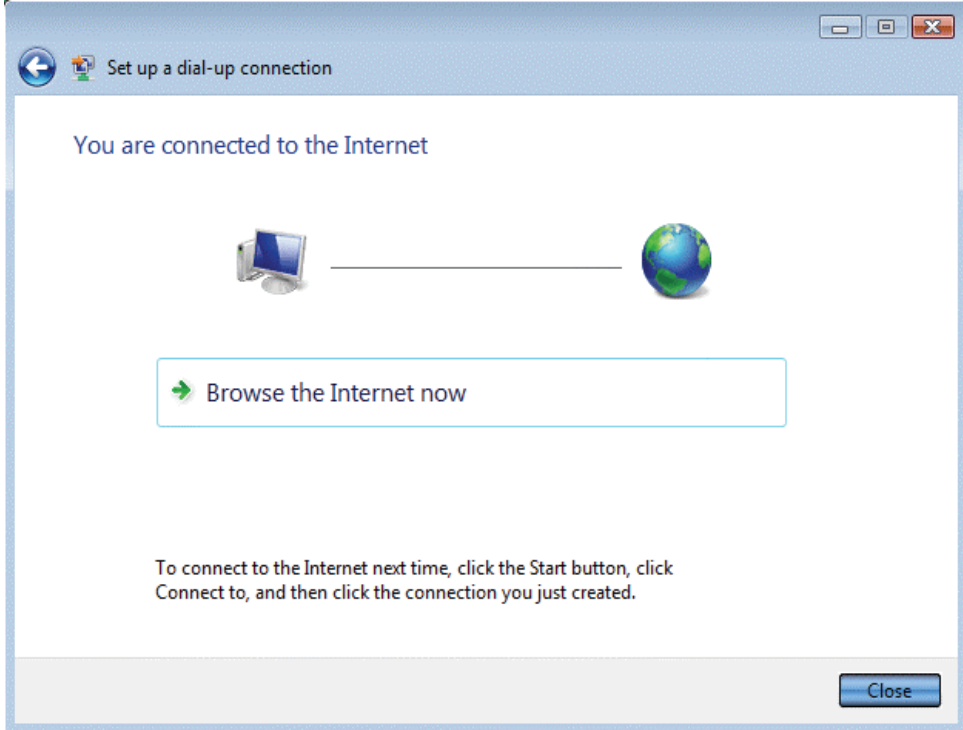


Figure-2.5

Step 6 Go to again **Start>control panel** as mentioned below (**Figure-2.6**)

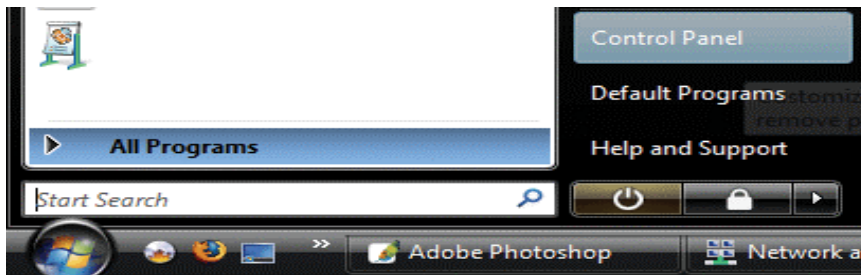


Figure-2.6

Step 7 Click the **network connection Center** (**Figure-2.7**)

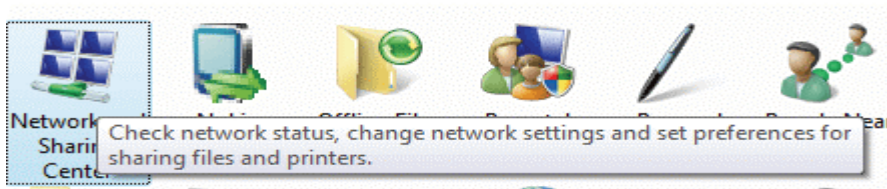


Figure-2.7

Step 9 click the **manage network connections** (**Figure-2.8**)

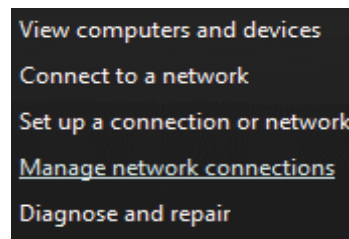


Figure-2.8

Step 10 Right click the **dialup connection and create shortcut** in your desktop (**Figure-2.9**)

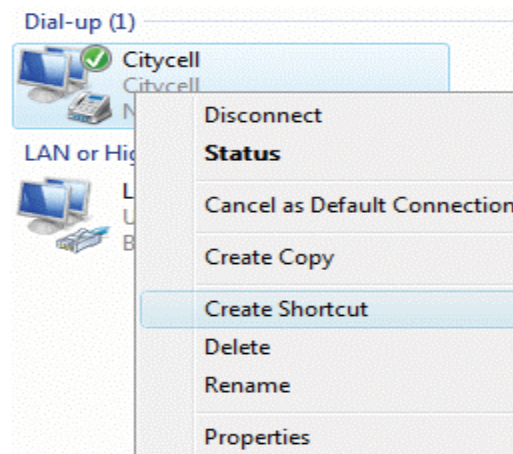


Figure-2.9