

# **Huawei C 5320 Modem Driver Installation Guideline for XP**

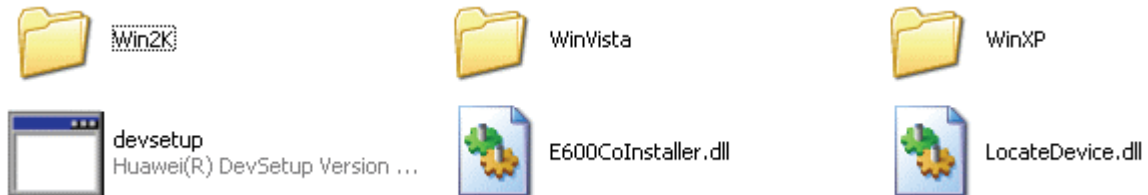
# Contents

---

<b>1. Installation procedure</b>	<b>3</b>
<b>2. Creating connection for windows XP</b>	<b>8</b>

# 1 Installation Procedure

**Step 1** Double click the **devsetup.exe**



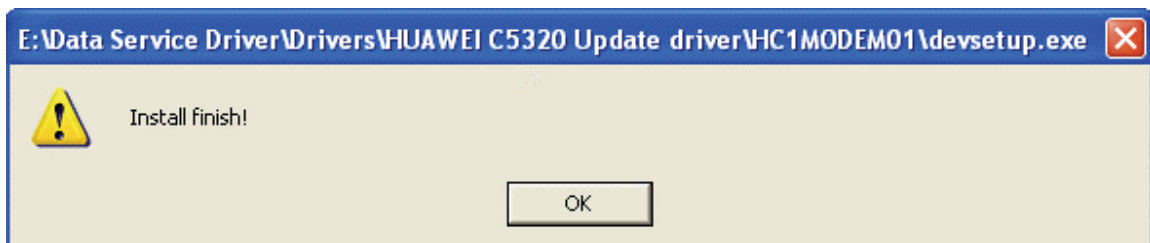
**Figure-1**

**Step 2** The following dialog box is displayed on your PC (**Figure 2**). Click **Continue Anyway** to proceed



**Figure-2**

**Step 3** Click **ok** to finish **installation (Figure-3)**



**Figure-3**

**Step 4** Plug the modem in your USB port and to set the phone mode as Data Service select **Menu > Settings > Phone Mode > Data Service>Active from your handset** and then you will see the below **Figure-4**.



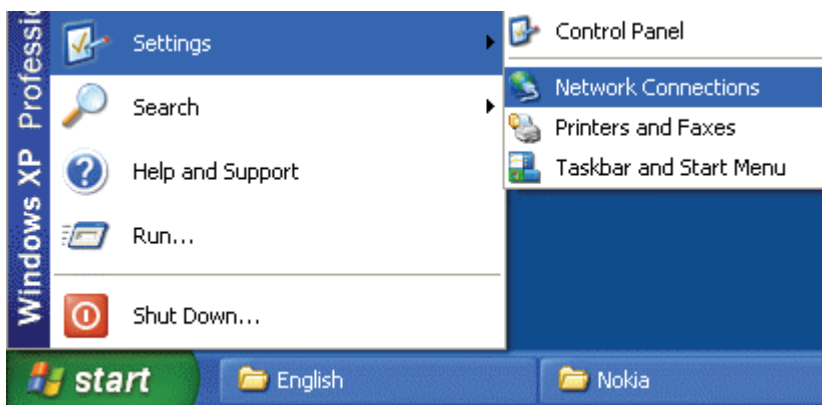
**Figure-4**

**Step 5** click **continue Anyway** to finish your installation

## 2. Creating connection for WinXP

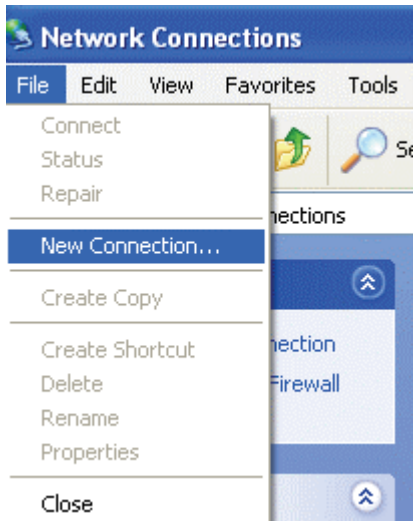
Follow the steps for creating windows XP dialer

**Step 1** click start>setting>network connections (**Figure-2.1**)



**Figure-2.1**

**Step 2** Click the File menu from the left side of the menu bar and click the new connection (**Figure-2.2**)



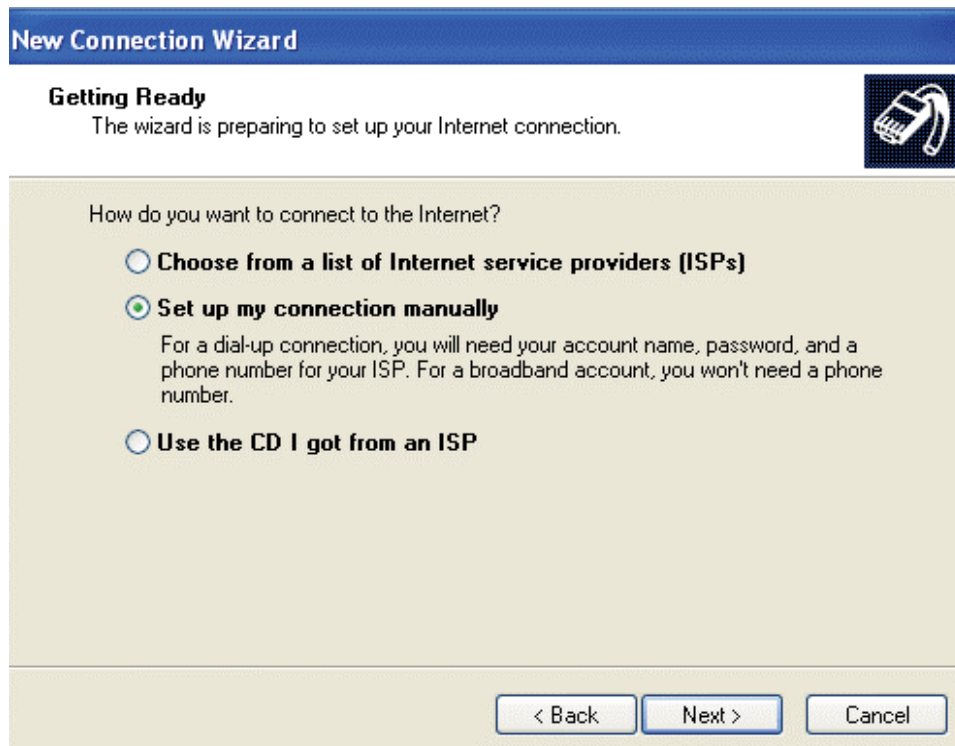
**Figure-2.2**

**Step 3** click **next** button and select the **connect to the internet** and click **Next** (**Figure-2.3**)



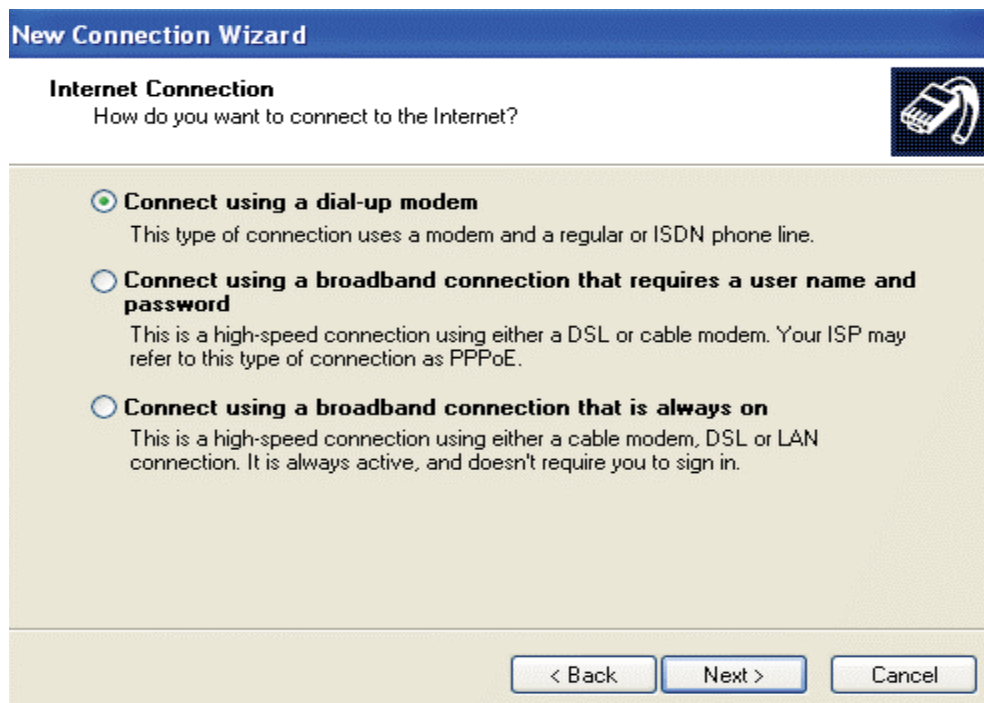
**Figure-2.3**

**Step 4** select the **setup my connection manually** and click **Next** (Figure-2.4)



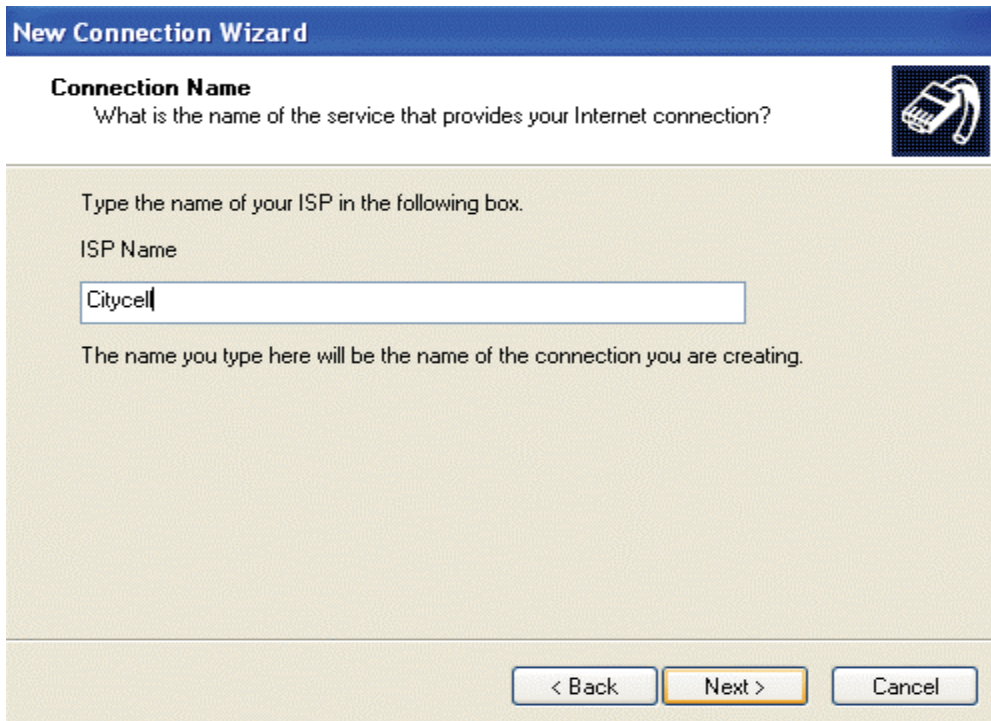
**Figure-2.4**

**Step 5** Choose the **Connect using dial-up modem** and click **Next** (Figure-2.5)



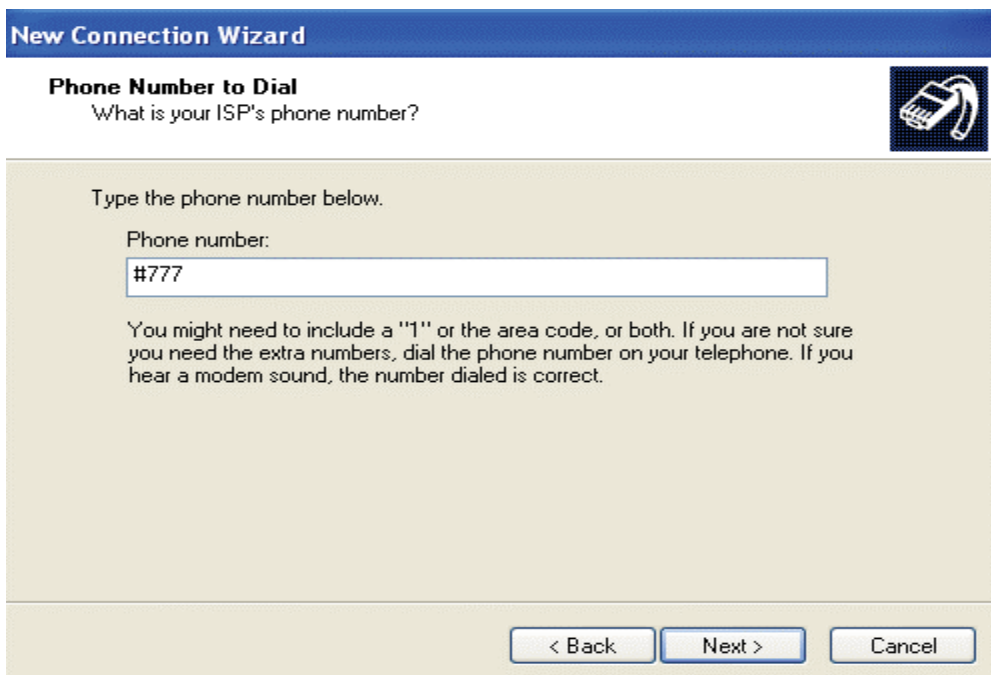
**Figure-2.5**

**Step 6** write the name of your service provider as **Citycell** (or **Any name**) (Figure-2.6)



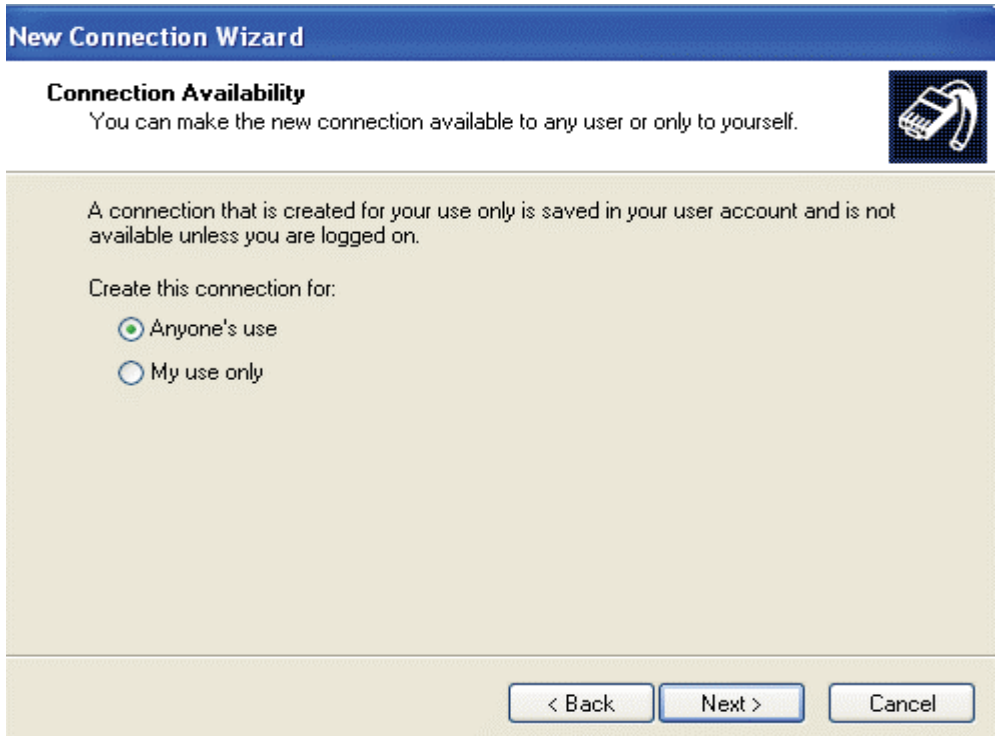
**Figure-2.6**

**Step 7** write the phone number as **#777** (**Figure-2.7**)



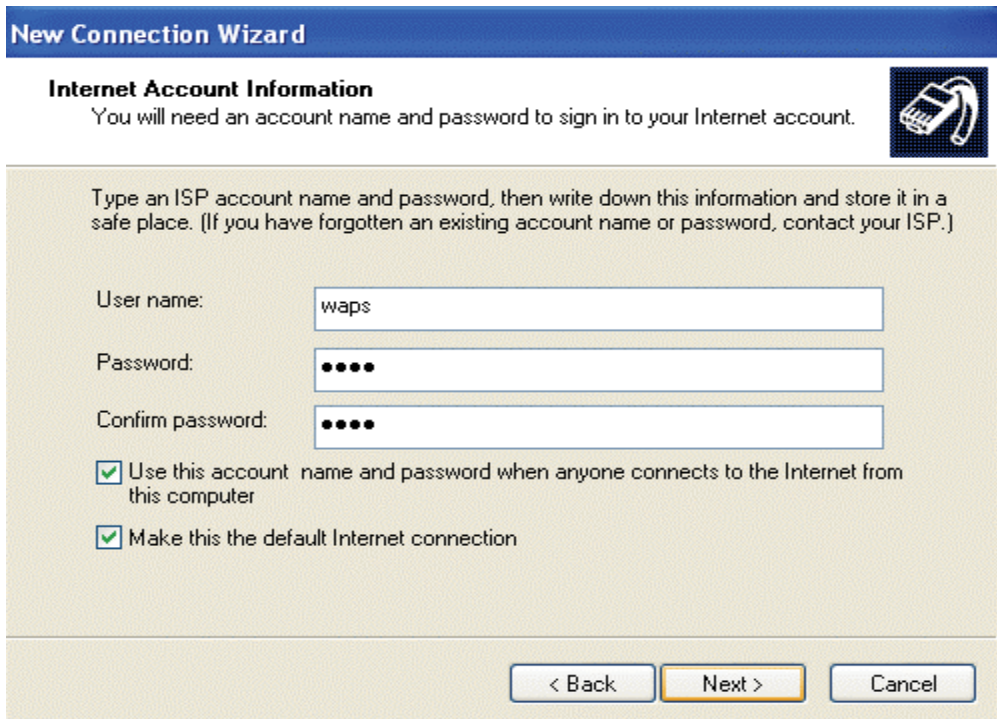
**Figure-2.7**

**Step 8** select **Anyone's use** and click **Next** (**Figure-2.8**)



**Figure-2.8**

**Step 9** write the username **waps** and password **waps** and click **Next (Figure-2.9)**



**Figure-2.9**

**Step 10** Click the **finish** button and **tick a mark** for shortcut to this connection to your desktop (**Figure-2.10**)



**Figure-2.10**