

Huawei EC-321 and EC-325 Modem Driver Installation Guideline

Contents

1 Installation process of Huawei Mobile	
3	

1 Installation process

Follow these steps to install the device driver

Step 1 Double click the **Setup.exe** file (**Figure-1**)



Figure-1

Step 2 Choose the English language option and click **Next** (**Figure-2**)

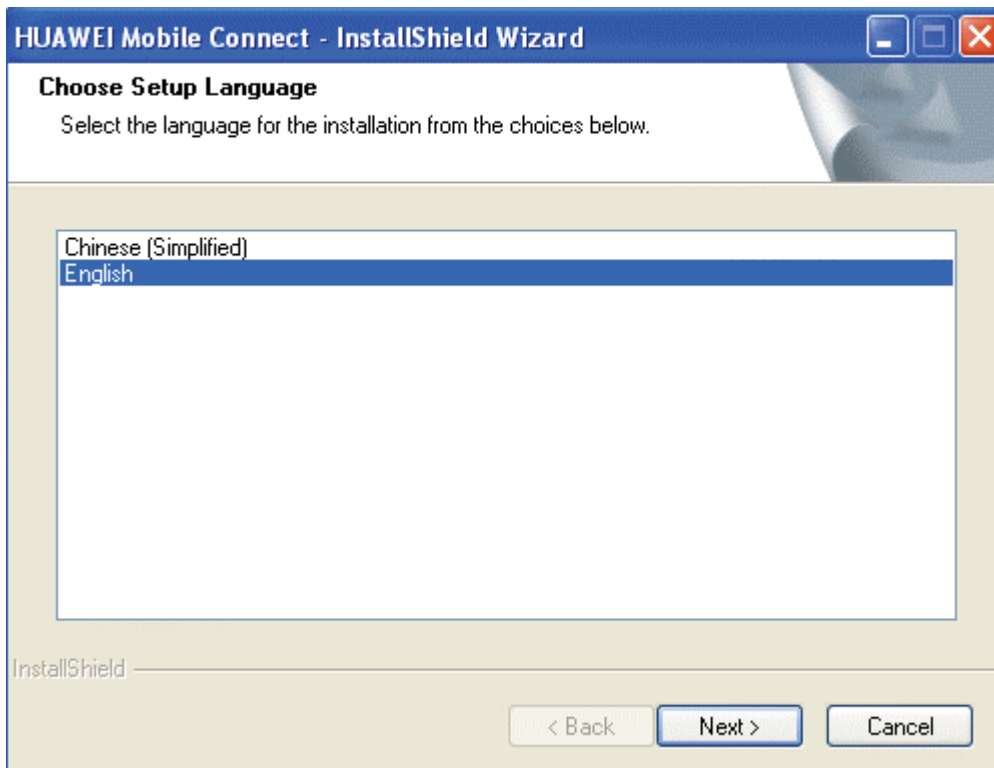


Figure-2

Step 3 Click **Next** (**Figure-3**)

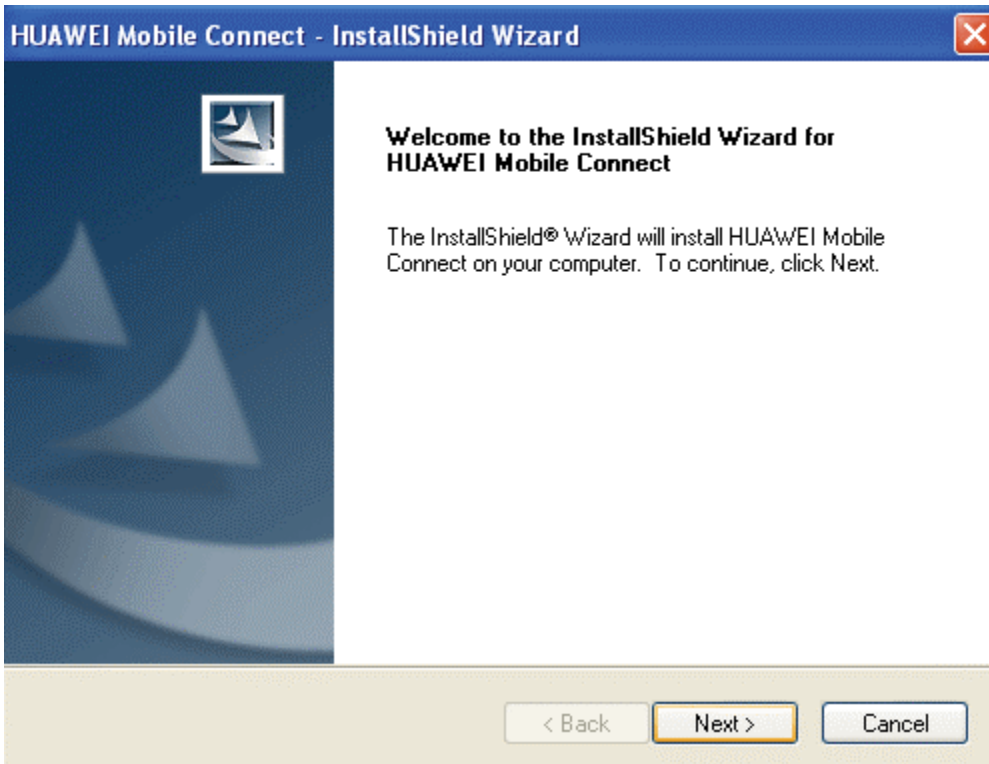


Figure-3

Step 4 Select I accept the terms of the license agreement and click **Next (Figure-4)**

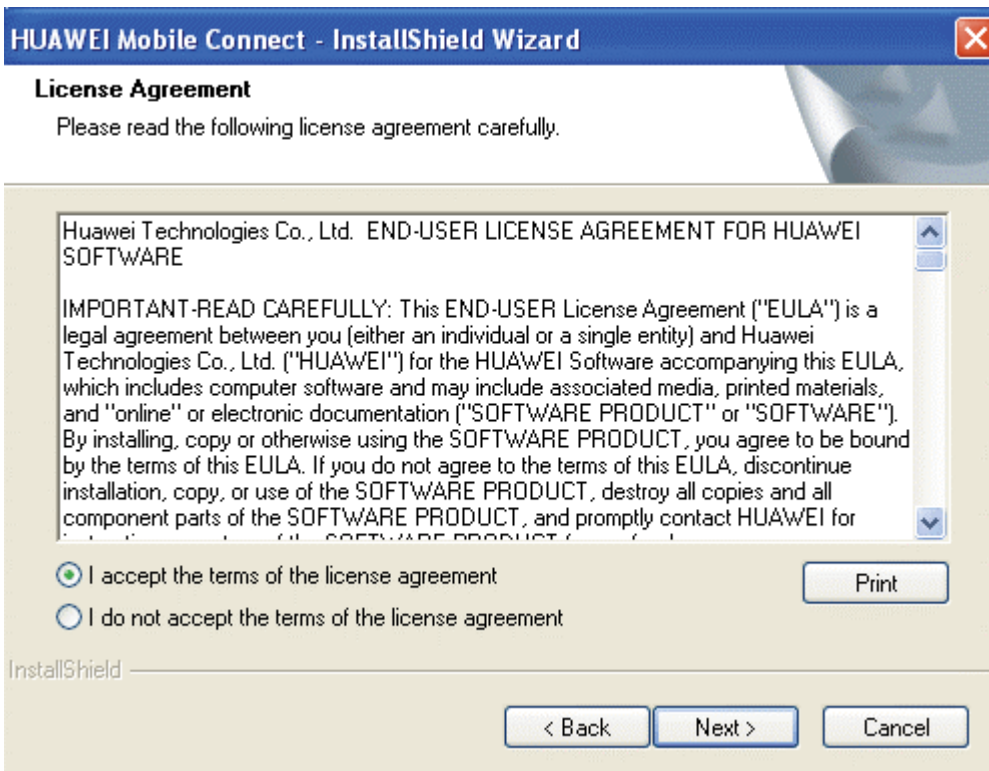


Figure-4

Step 5 If you want to install it in any other folder click Change or Click **Next (Figure-5)**

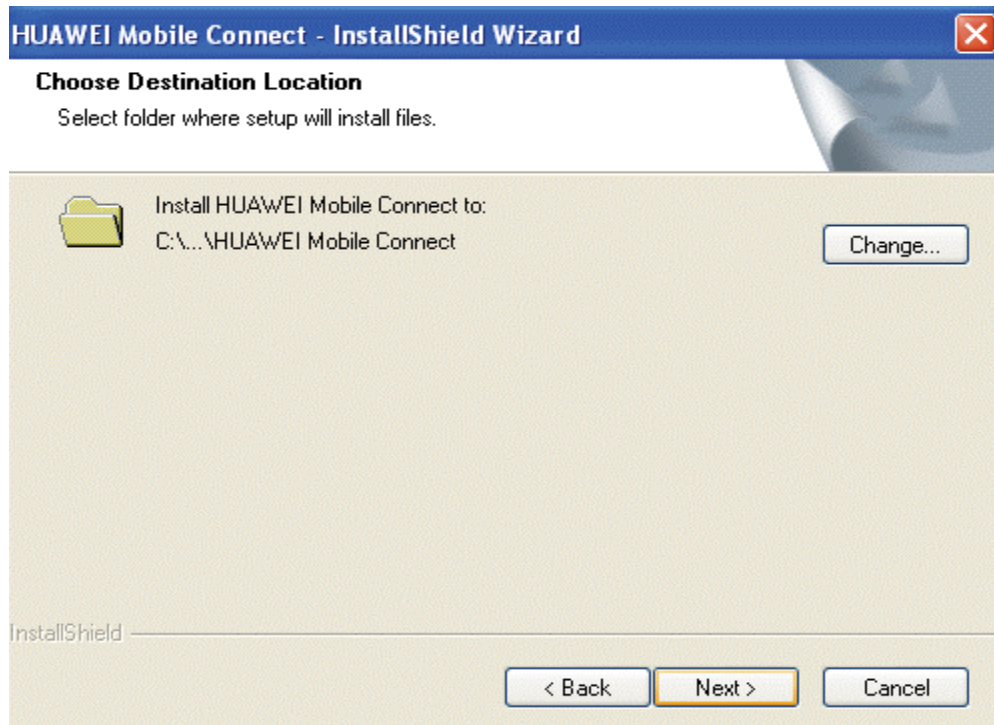


Figure-5

Step 5 Click **Next** as the following window appears (**Figure-6**)

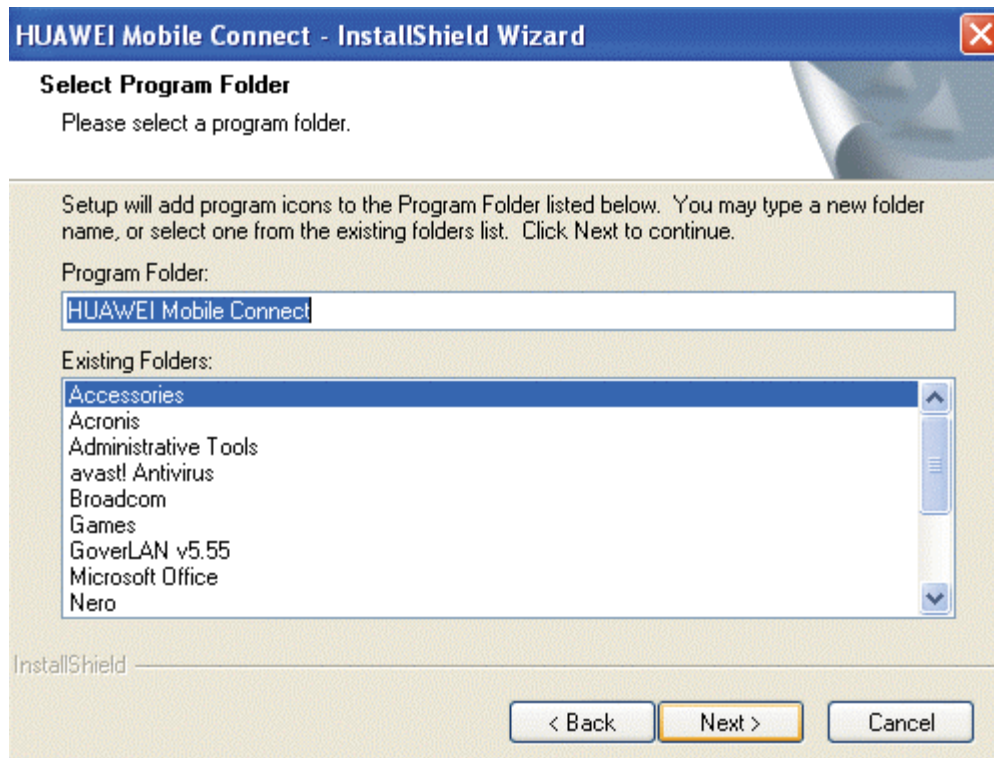


Figure-6

Step 6 Click **Finish (Figure-7)**

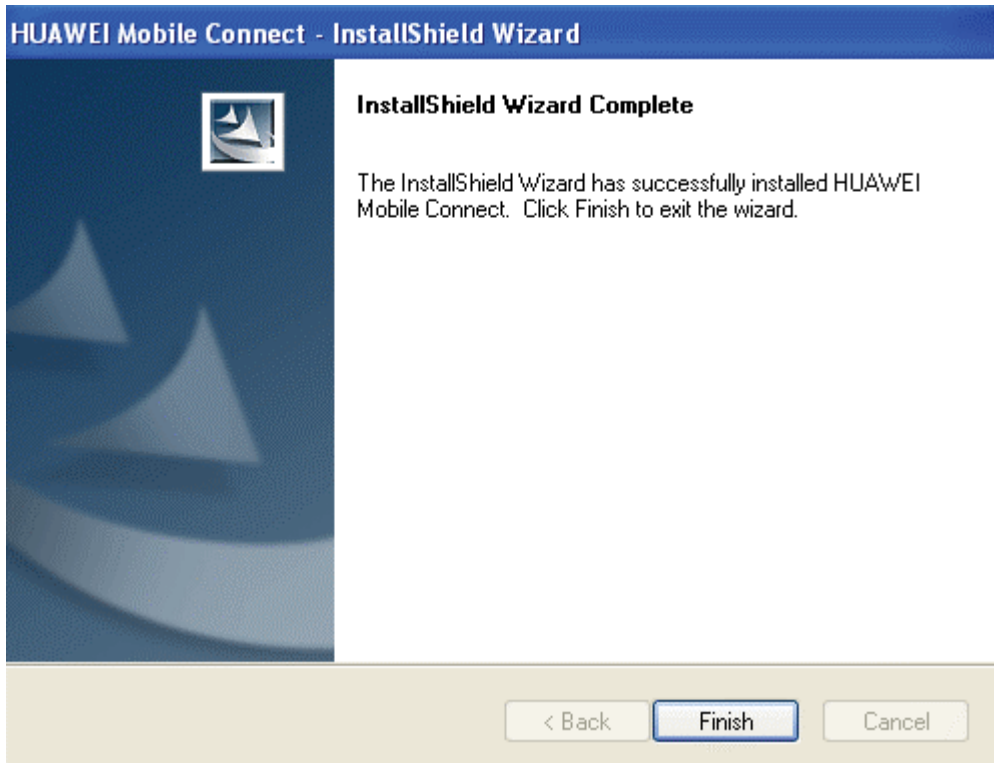


Figure-7

Step 7 Plug in your device to your computer using the USB cable and let Windows finish Installing (automatically) or click **continue anyway (Figure 8 and 9)**

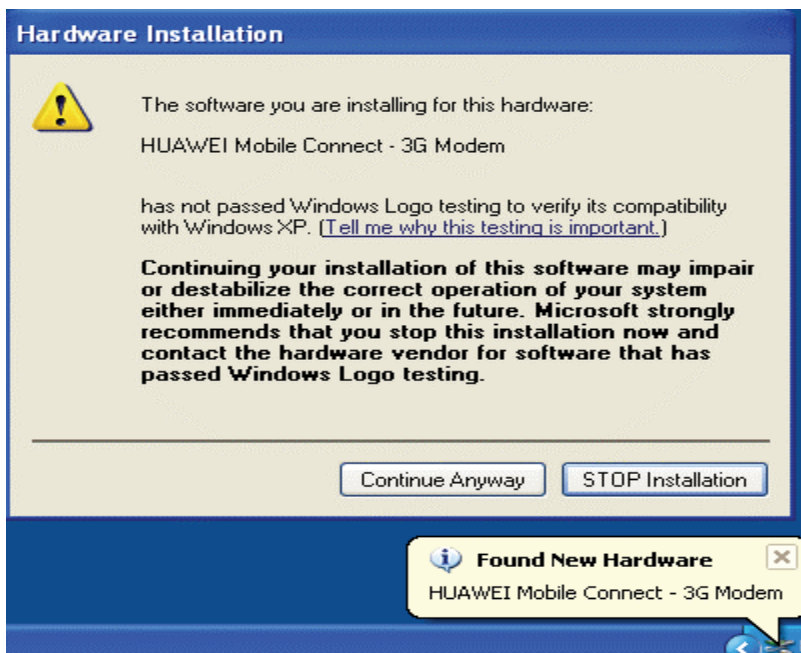


Figure-8

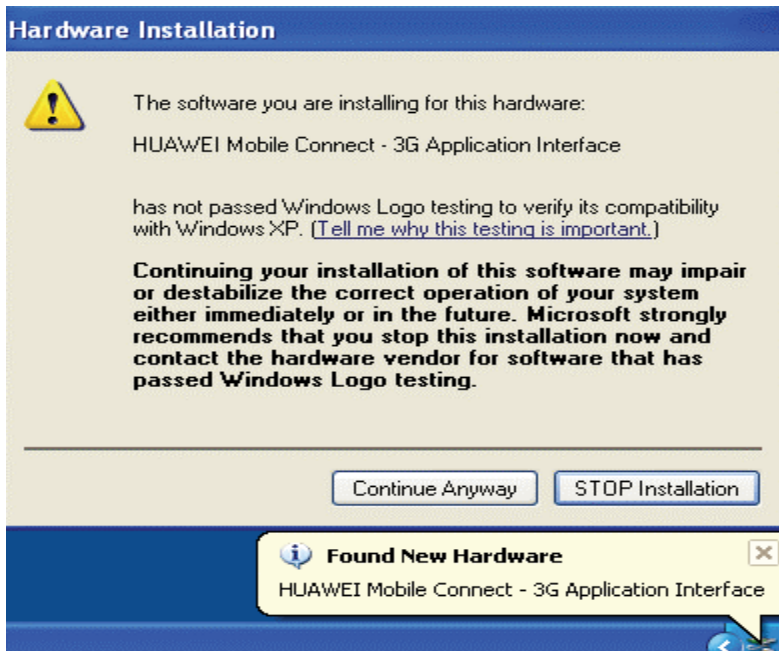


Figure-9

Step 8 Click the shortcut icon **Huawei Mobile connect** on your desktop as the below **Figure-10**



Figure-10



Figure-11

Step 9 Wait for sometimes for signal bar (**Figure 12**)



Figure-12

Step 9 Go to **Settings** and click the **Network Connection Settings (Figure-13)**

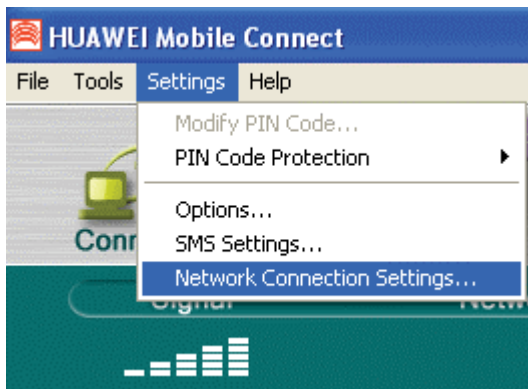


Figure-13

Step 10 Click New. Enter Citycell Zoom in profile name, #777 in Number, **waps** in username and again **waps** in password. Click Save (**Figure-14**)

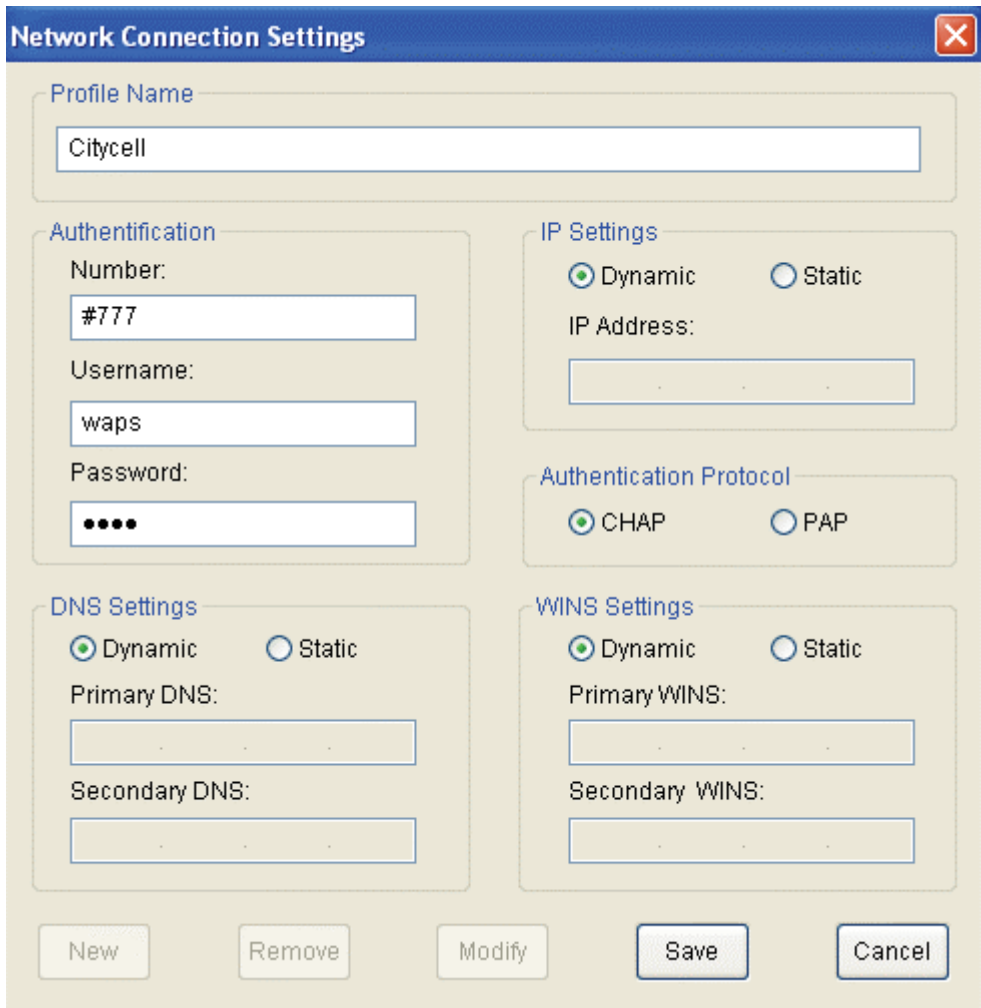


Figure-14

Step 11

Click the connect button of the Huawei Mobile Connect and enjoy the Data Service **(Figure-15)**

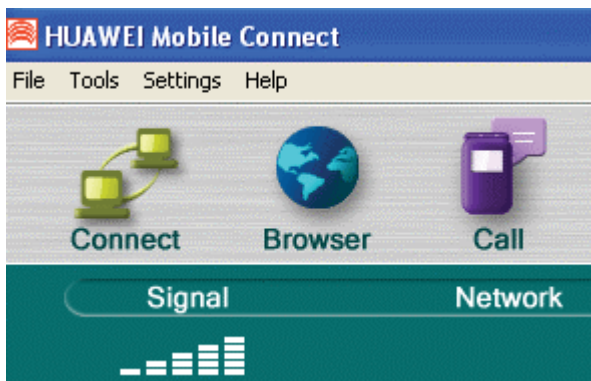


Figure-15