

Nokia 3155 and 6235 Modem Driver Installation Guideline for XP

Contents

1. Installation procedure	3
2. Creating connection for windows XP	8

1. Installation procedure:

Follow these steps to install the device driver:

Step-1 Double click Nokia PC Suite setup file (**Figure-1**)

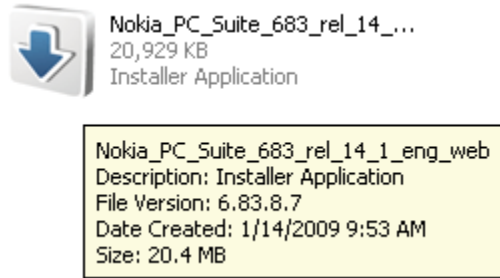


Figure-1

Step 2 You will see a dialog box to appear illustrated in Figure 2. Click **Next** (**Figure-2**)

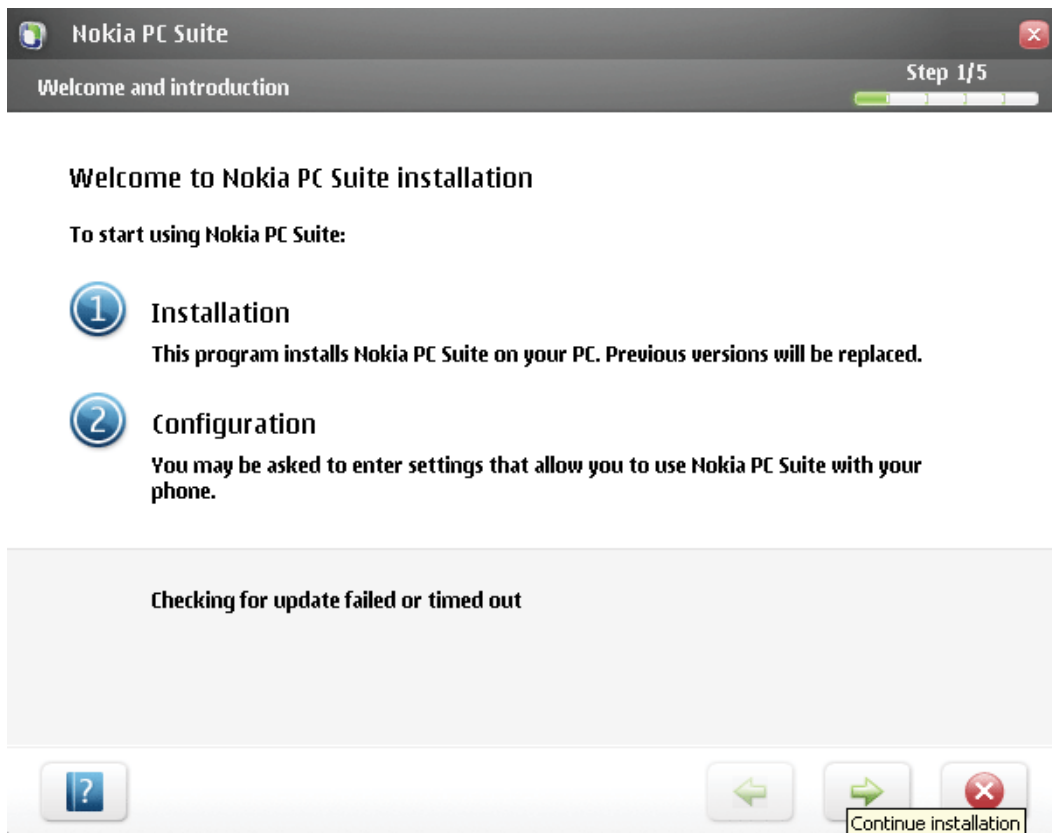


Figure-2

Step 3 You will be prompted, as illustrated in Figure-3, with License Agreement dialog. Select **I accept the terms in the license agreement** and click **Next** (**Figure-3**)

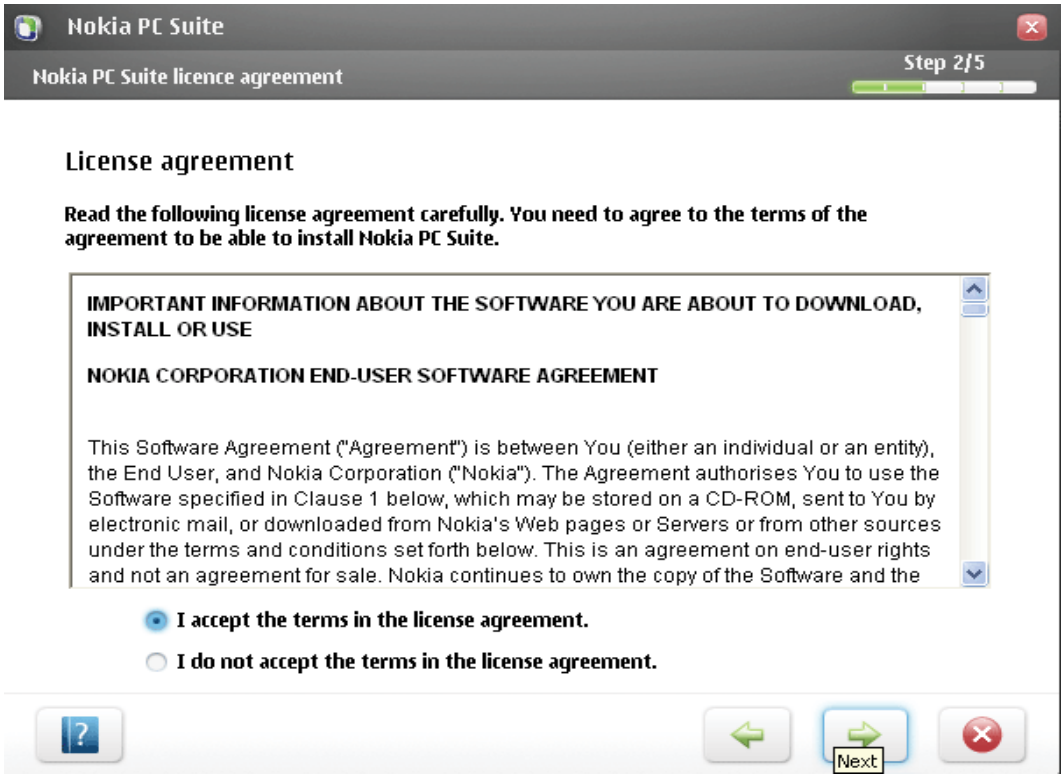


Figure-3

Step 4 You will have a screen as in Figure-4. Click **Install (Figure-4)**



Figure-4

Step 4 Wait for a while as the files are installed in your computer (**Figure-5**)

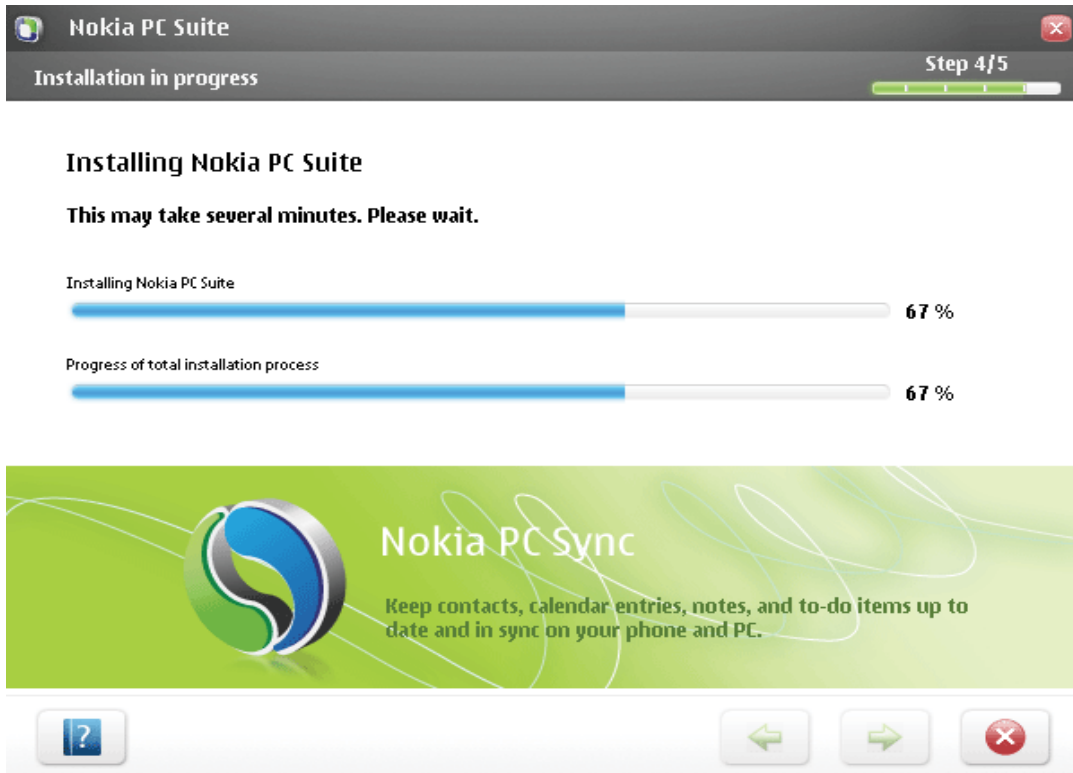


Figure-5

Step 5 Click **next** to Finish your installation (**Figure-6**)

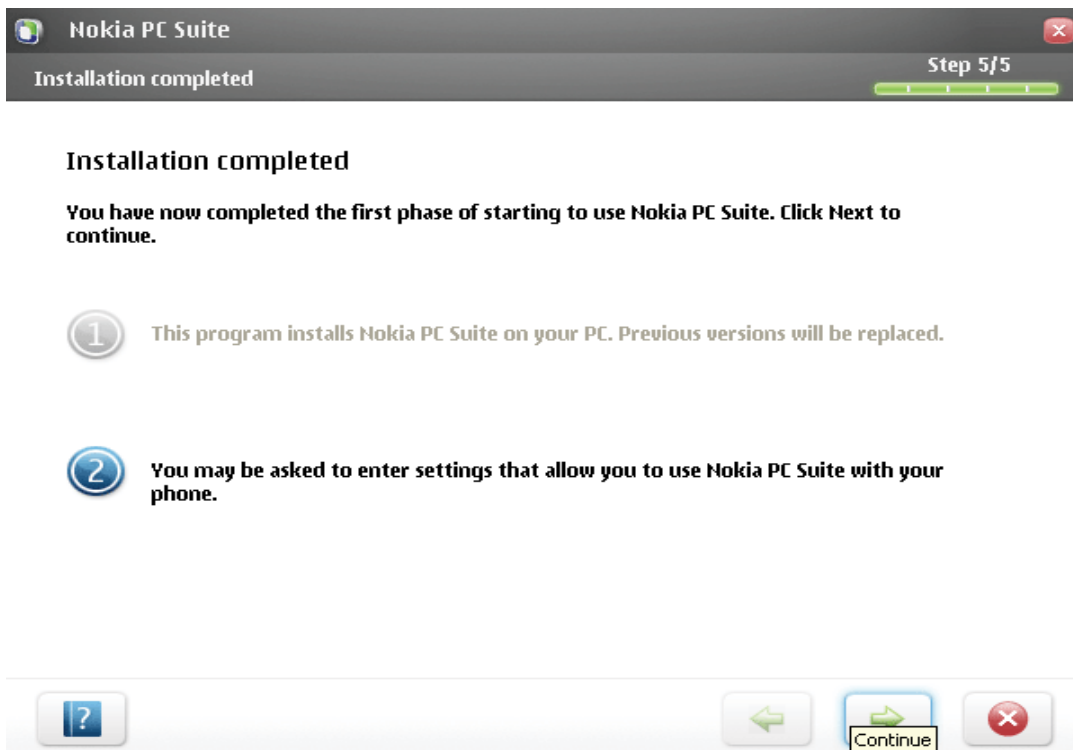


Figure-6

Step 6 Plug the handset with USB cable (DKU-2 or CA-53) in your PC (Figure-7)

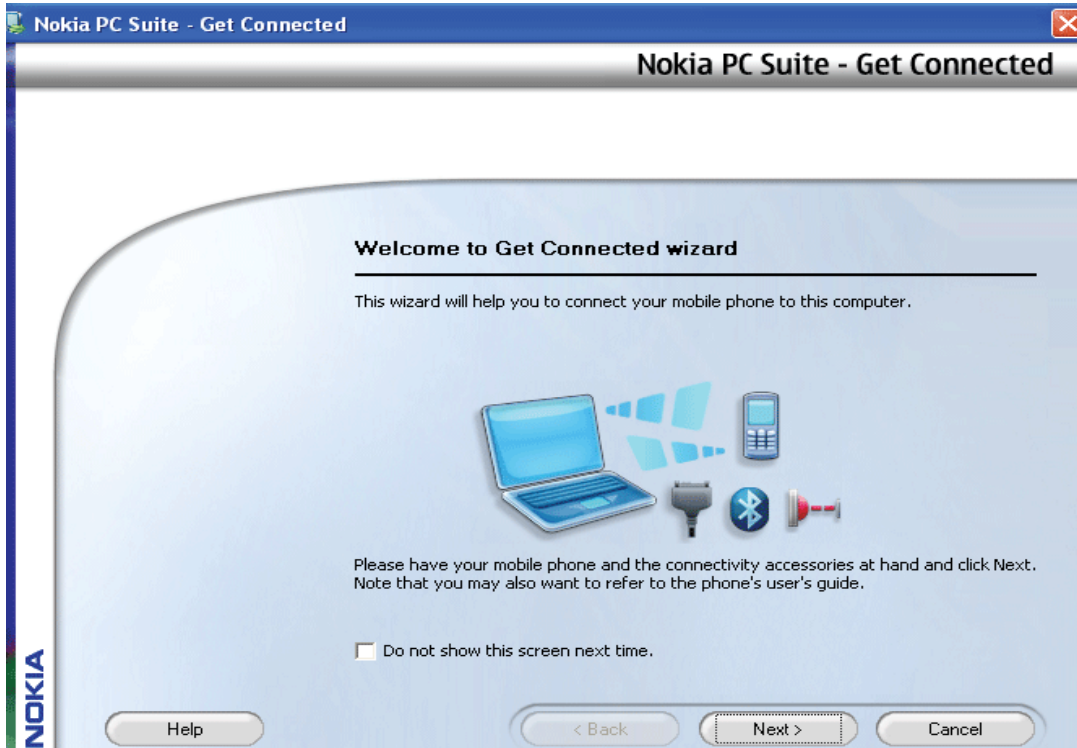


Figure-7

Step 7 After plugging in the handset **new hardware found** will appear (figure-7)and driver will be installed automatically (Figure 8)



Figure-8

Step 8 click the **finish** button (Figure-9)

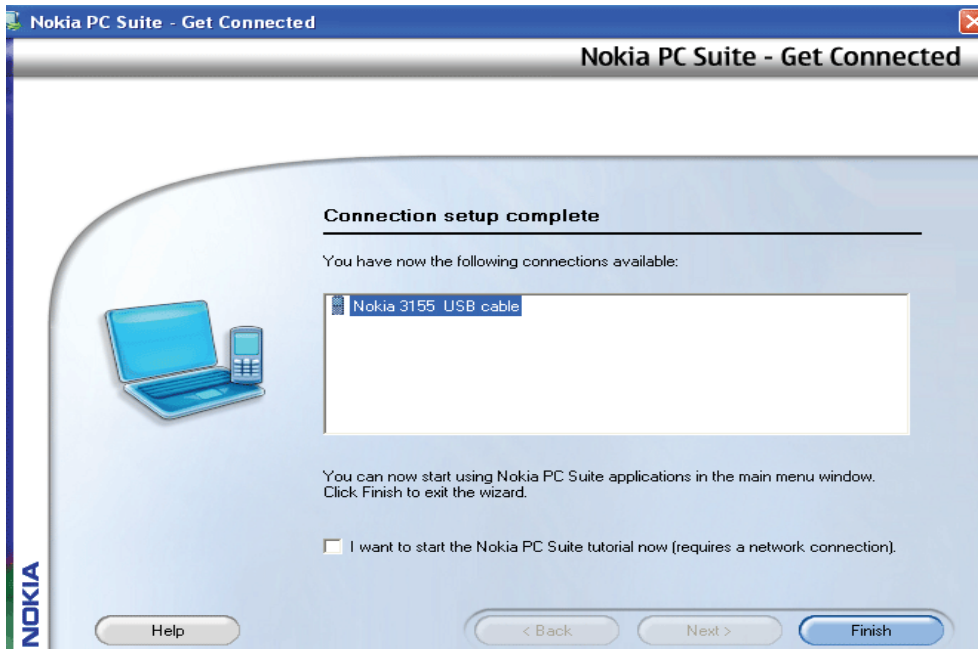


Figure-9

Step 9 Cancel the window (Figure-10)

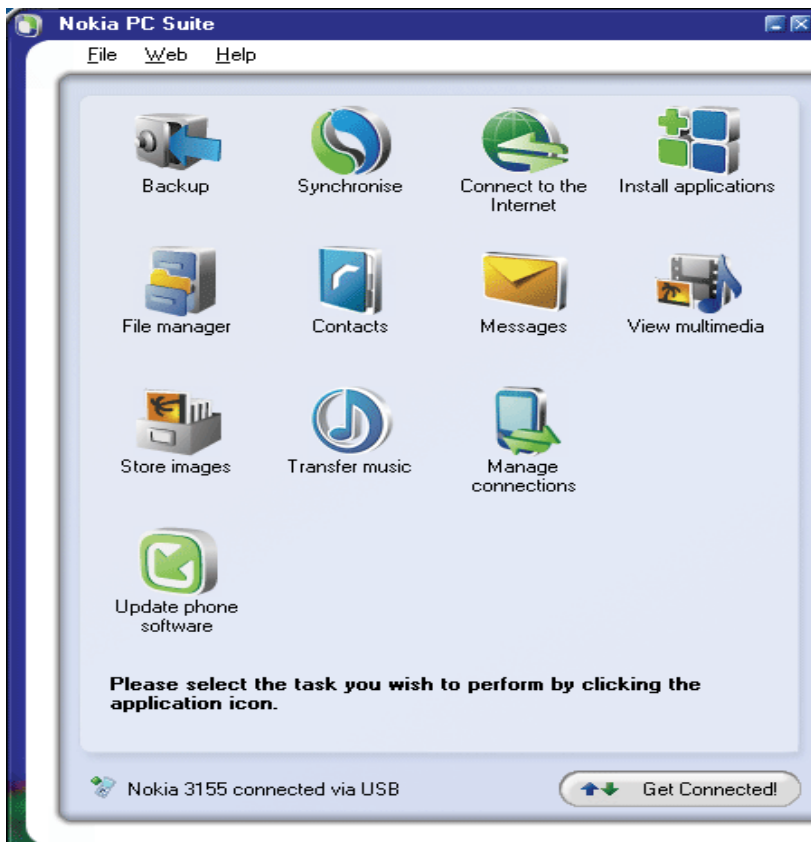


Figure-10

2. Creating Dial-Up connection for WinXP:

Follow the steps for creating windows XP dialer

Step 1 click start button>setting>network connections as the below **Figure-2.1**

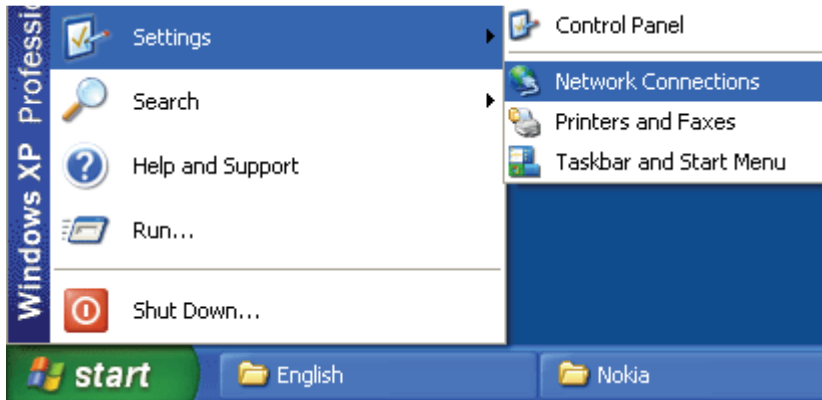


Figure-2.1

Step 2 Click the File menu from the left side of the menu bar and click the new connection (**Figure-2.2**)

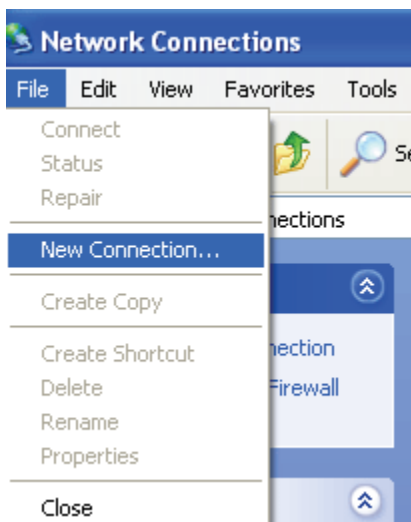


Figure-2.2

Step 3 click **next** button and select the **Connect to the Internet** and click **Next** (Figure-2.3)



Figure-2.3

Step 4 select the **setup my connection manually** and click **Next** (Figure-2.4)

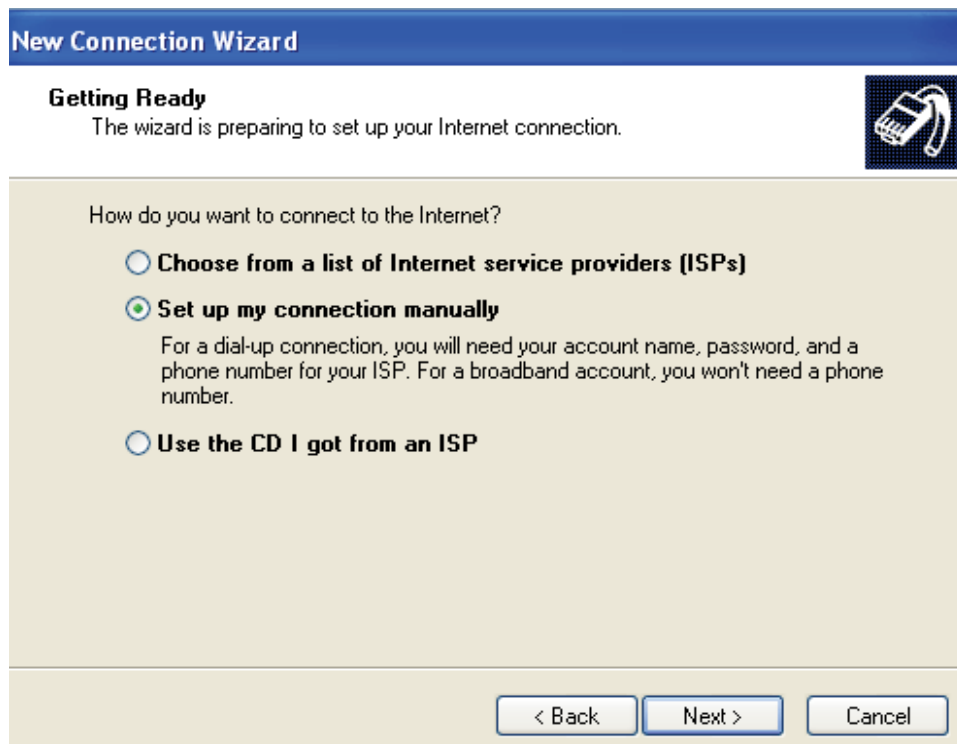


Figure-2.4

Step 5 Choose connect using dial-up modem and click Next (Figure-2.5)

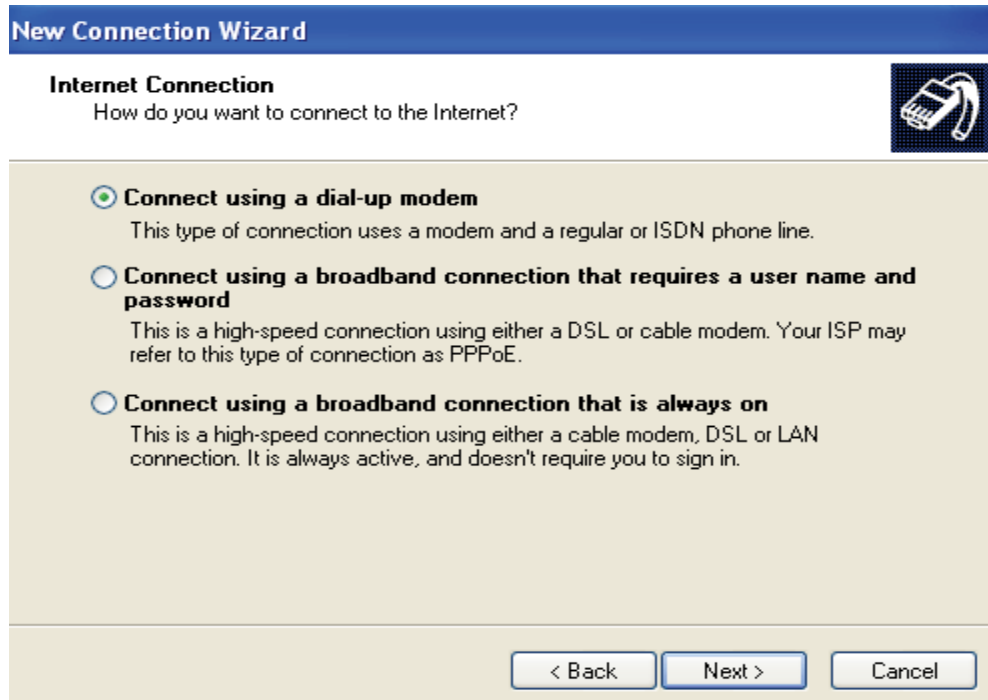


Figure-2.5

Step 6 write the name of your service provider as Citycell (or Any name) (Figure-2.6)

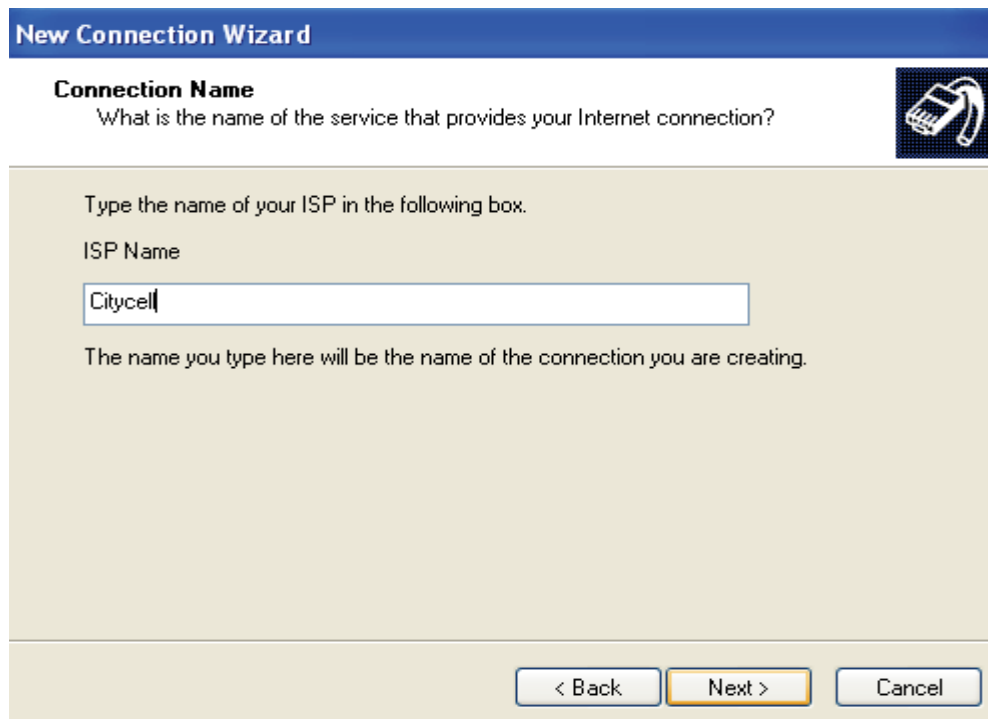


Figure-2.6

Step 7 Type the phone number as #777 (Figure-2.7)

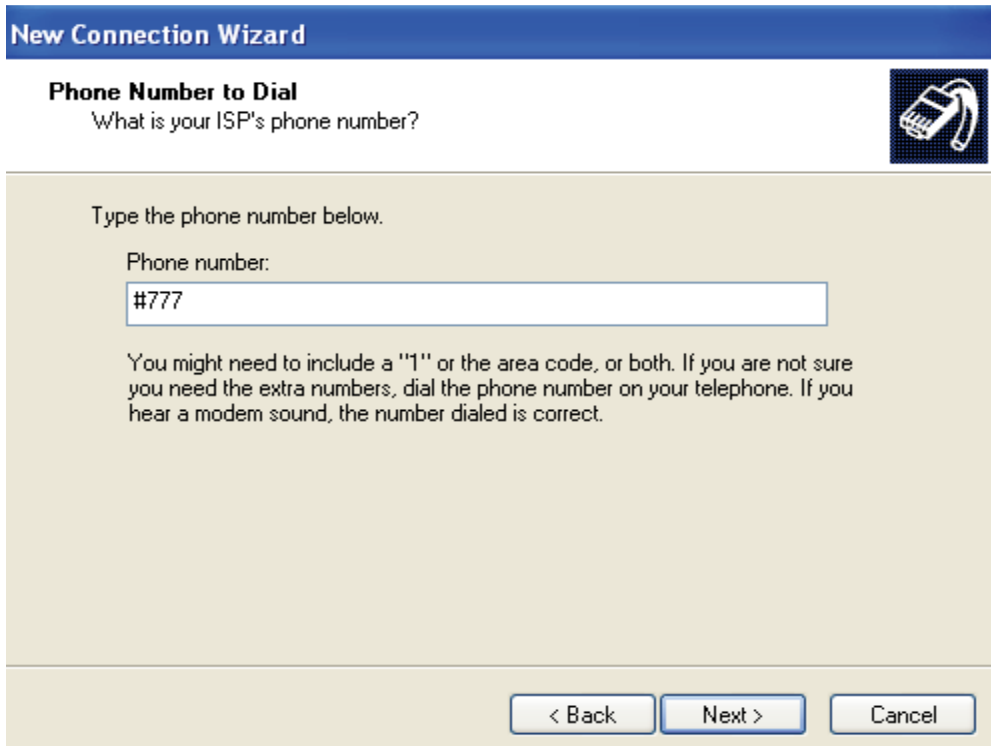


Figure-2.7

Step 8 select **Anyone's use** and click **Next** (Figure2.8)

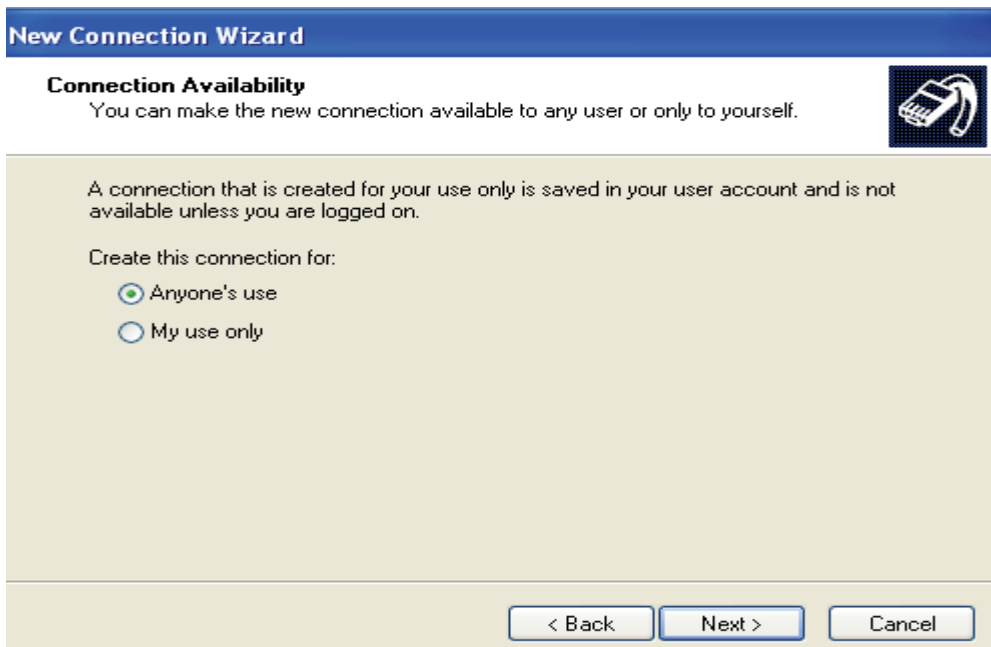


Figure2.8

Step 9 Type the username as **waps** and password as **waps** (Figure-2.9)



Figure-2.9

Step 10 Click the **finish** button and **tick a mark** for shortcut to this connection (Figure-2.10)



Figure-2.10